

# OPM - Criminal Justice Policy & Planning Division

## Monthly Indicators Report

### Highlights

- On October 1, 2018 - 13,472 inmates were incarcerated in Connecticut's prisons and jails, 62 more than last month, but 638 fewer than October 2017, a 4.5% drop.
- In September, the FBI released its Uniform Crime Data Report for 2017 revealing that CT had the second largest drop in violent crime rate, after New Jersey, over the last 5 years. Since 2012, Connecticut's violent crime rate has fallen more than 19%. [https://www.ct.gov/opm/lib/opm/cjp/cj/about/us\\_violent\\_crime\\_rate\\_comparison\\_2018.pdf](https://www.ct.gov/opm/lib/opm/cjp/cj/about/us_violent_crime_rate_comparison_2018.pdf)
- Only once this year have statewide criminal arrests been higher than they were last year. Year-to-date, arrests are down 6.6% compared to 2017 and 23% when compared to the first nine months of 2014.
- As CSSD's new case management information system comes on line, fewer of their reported figures are estimated. Readers are cautioned that some figures may change dramatically from month to month.
- In the last two years the number of pretrial inmates with detainers has risen by 55%. This month chart 2a takes a closer look at the pretrial population and the growing number of accused inmates held on detainers in addition to financial bonds.
- OPM has released its latest report: *Women in Jail in Connecticut*, tracking the movements and detailing the characteristics of two pretrial cohorts admitted to York in 2014 and 2017. The full report is available online at the link below: [https://www.ct.gov/opm/lib/opm/cjp/cj/about/women\\_in\\_jail\\_in\\_ct\\_october\\_2018\\_pre-release.pdf](https://www.ct.gov/opm/lib/opm/cjp/cj/about/women_in_jail_in_ct_october_2018_pre-release.pdf)

### Prison Population Forecast

The prison population is 200 inmates above OPM's February prediction. Looking at the recent past for guidance it becomes apparent that the prison population in 2018 most closely resembles the last election year, 2014. It is possible that election years can impact the criminal justice system in both obvious and subtle ways.

An impending change in administration might imperceptibly change the behavior of many front-line criminal justice employees. Uncertainty about the future and anticipating change in management has the potential to cause many small delays which in themselves would not be appreciable, but in the aggregate, become considerable.

Rare, but dramatic events often coincide with the electoral cycle, like the "warrant sweeps" conducted in July. The impact of adding 200 pretrial offenders during the month of July is still felt in the pretrial population.

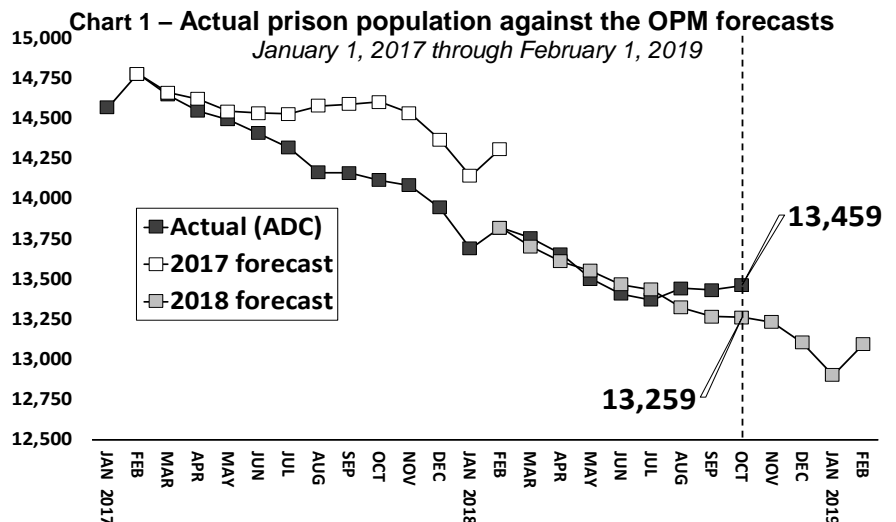
Based on an examination of pretrial lengths of stay, OPM estimates that about 75 of the pretrial admits brought in during the warrant sweep were incarcerated as accused inmates on October 1<sup>st</sup>.

Given the factors described above, dropping below the 13,000 inmate barrier by January 1<sup>st</sup> appears unlikely. The population is expected to fall by just over 300 inmates over the last two months of 2018. Should that be the case, the prison population will be tantalizingly close, but just above the 13,000 inmate milestone.

TABLE 1 – Prison Population Forecast

	Avg. Daily Count	OPM 2018 Forecast	Inmate difference
JAN '18	13,688	-	-
FEB	13,819	13,819	-
MAR	13,753	13,701	-52
APR	13,652	13,607	-45
MAY	13,499	13,550	51
JUN	13,405	13,465	60
JUL	13,369	13,433	64
AUG	13,439	13,320	-119
SEP	13,431	13,265	-166
OCT	13,459	13,259	-200
NOV	-	13,230	-
DEC	-	13,103	-
JAN '19	-	12,901	-
FEB	-	13,093	-

Avg. Daily Count (ADC) for 1st week of month



## Chart 2 - Criminal justice, monthly counts and flows

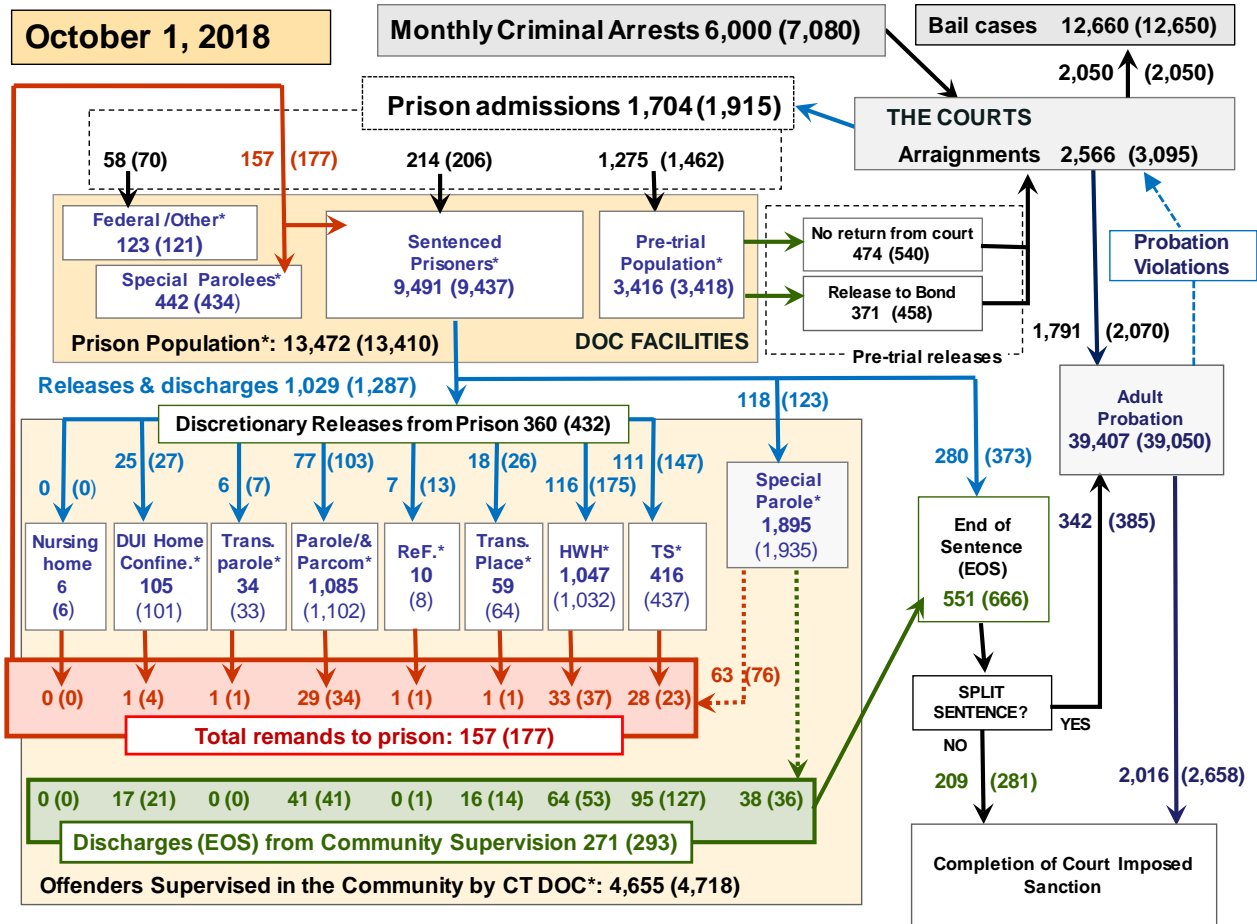
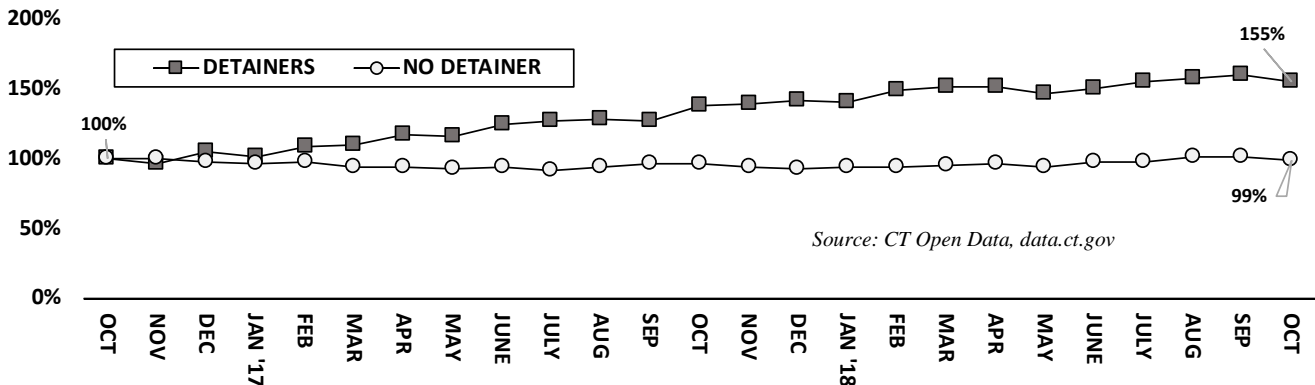


Chart 2 contains monthly operations data for September 2018 and daily counts reported on October 1, 2018. Asterisks (\*) indicate the daily count on October 1<sup>st</sup>. Figures for last month are enclosed by parentheses. Sources: Arrests – CRMVS, Court and probation data - CSSD, all other data - CT DOC. Note: Some Judicial Branch data this month is estimated.

## Chart 2a – Increasing use of detainers, indexed



The chart above shows the growing number of pretrial prisoners being held on a detainer. Over the last two years, the number of pretrial inmates held only on a financial bond has remained flat, this month there are virtually the same number (99%) as there were on October 15, 2016. Pretrial inmates with a detainer, shown by a dark grey square above have risen to 155% of their October 2016 total over the same period.

Pretrial inmates can have one of seven different kinds of detainer placed on them. Immigration

detainers are being used more and more, but over this entire time frame special parole detainers are the most frequently used. These inmates discharge from a sentence and are placed on special parole status in the community. Should they be charged with a new crime while on special parole supervision, they are remanded to prison. While cases are pending, they are categorized as accused, pretrial offenders, but cannot be released on bond because of the special parole detainer. This effectively limits the impact bond assistance or diversionary programs can have on the pretrial population.

**Table 2 - First-of-month totals**

	2018		2018		2017		% Change	
	Aug. 1	Sept. 1	Oct. 1	Oct. 1	Monthly	Annual		
<b>DOC Facilities</b>								
Federal/Other	115	121	123	125	1.7%	-1.6%		
Sentenced	9,470	9,437	9,491	10,274	0.6%	-7.6%		
Special Parole	418	434	442	470	1.8%	-6.0%		
Pre-trial	3,441	3,418	3,416	3,241	-0.1%	5.4%		
<b>Total</b>	<b>13,444</b>	<b>13,410</b>	<b>13,472</b>	<b>14,110</b>	<b>0.5%</b>	<b>-4.5%</b>		
<b>DOC Community</b>								
Transfer Parole	37	33	34	25	3.0%	36.0%		
Parole/ Parcom Total	1,103	1,102	1,083	1,103	-1.7%	-1.8%		
Parole	933	932	907	943	-2.7%	-3.8%		
Parcom @ CT	170	170	176	160	3.5%	10.0%		
Furlough	3	8	10	28	-	-		
Trans Placement	58	64	59	45	-7.8%	31.1%		
DUI/Home confine.	105	101	105	100	4.0%	5.0%		
Halfway House Total	1,042	1,032	1,047	1,036	1.5%	1.1%		
Comm Release	498	524	504	503	-3.8%	0.2%		
TS	50	32	26	64	-18.8%	-59.4%		
Parole	146	133	146	150	9.8%	-2.7%		
Transfer Parole	6	6	6	3	-	-		
Special Parole	342	337	365	313	8.3%	16.6%		
TS	453	437	416	545	-4.8%	-23.7%		
Nursing home	6	6	6	6	-	-		
Special Parole	1,927	1,935	1,895	1,772	-2.1%	6.9%		
<b>Total</b>	<b>4,734</b>	<b>4,718</b>	<b>4,655</b>	<b>4,660</b>	<b>-1.3%</b>	<b>-0.1%</b>		

**Table 2a - Admissions, releases & discharges**

	2018		2018		2017		% Change	
	July	August	Sept.	Sept.	Monthly	Annual		
<b>Admissions</b>								
Federal/Other	51	70	58	86	-17.1%	-32.6%		
Remands	164	177	157	149	-11.3%	5.4%		
DUI	3	5	2	5	-	-		
Parole	23	34	29	24	-14.7%	20.8%		
Trans Plac/Furlough	2	1	2	2	-	-		
HWH	30	37	33	35	-10.8%	-5.7%		
TS	28	23	28	32	21.7%	-12.5%		
Special Parole	77	76	63	51	-17.1%	23.5%		
New Sentence	185	206	214	227	3.9%	-5.7%		
VOP	64	64	51	68	-20.3%	-25.0%		
Pre-trial	1,514	1,462	1,275	1,331	-12.8%	-4.2%		
<b>Total</b>	<b>1,914</b>	<b>1,915</b>	<b>1,704</b>	<b>1,793</b>	<b>-11.0%</b>	<b>-5.0%</b>		
<b>Releases and discharges</b>								
Transfer Parole	10	7	6	4	-	-		
Parole	96	103	77	89	-25.2%	-13.5%		
Furlough	7	13	7	21	-	-		
Trans. Placement	24	26	18	18	-30.8%	0.0%		
Home Confinement DU	29	27	25	20	-7.4%	25.0%		
HWH	116	175	116	115	-33.7%	0.9%		
TS	150	147	111	170	-24.5%	-34.7%		
Special Parole	147	123	118	120	-4.1%	-1.7%		
Nursing home	0	0	0	0	-	-		
End of Sentence	613	666	551	663	-17.3%	-16.9%		
<b>Total</b>	<b>1,192</b>	<b>1,287</b>	<b>1,029</b>	<b>1,220</b>	<b>-20.0%</b>	<b>-15.7%</b>		
<b>Pre-trial Releases*</b>								
From Court	507	540	474	474	-12.2%	0.0%		
Release to Bond	422	458	371	431	-19.0%	-13.9%		

\* Totals reflect events, not individual offenders

**DOC - Community Release Unit (CRU)**

**Table 3 - Case reviews and release metrics**

	Cases				Approval Rate
	Reviewed	Approved	Denied	Continued	
July	678	312	104	105	46%
Aug.	719	341	117	101	47%
Sept.	641	310	93	83	48%
Sept. '17	690	338	101	94	49%

**Board of Pardons and Paroles**

**Table 4 - Parole hearings, new cases**

	Parole Hearings	Paroles granted	Grant rate	Paroles granted, 2017	Paroles granted, 2016
July	149	77	52%	87	99
Aug.	155	73	47%	70	69
Sept.	167	82	49%	80	97

**Table 4a - Other BOPP actions**

	Reparole from revocation	Reparole from rescission	Closed interest cases	Special parole cases	Transfer parole cases
July	27	4	25	39	10
Aug	33	2	24	30	9
Sept.	51	1	20	47	13
Sept. '17	44	2	17	35	1

**The pre-trial population**

**Table 5 - Bond ranges for pre-trial detainees**

Bond amount	Aug 1, 2018	Sept. 1, 2018	Oct. 1, 2018	Oct. 1, 2017
Less than \$20K	639	643	598	547
\$20K to < \$50K	505	523	488	549
\$50K to <\$100K	659	633	634	716
\$100K or higher	1,790	1,811	1,784	1,521
Persons w/bonds	3,593	3,610	3,504	3,319
Over \$1M	203	193	197	152

**Table 5a - Pre-trial, weeks since admission**

Weeks since last DOC admit	Aug 1, 2018	Sept. 1, 2018	Oct. 1, 2018	Oct. 1, 2017
< 1 week	479	417	420	442
1 to < 3 weeks	424	353	353	357
3 to < 10 weeks	805	932	834	826
10 to < 30 weeks	954	949	968	883
30 wks or more	931	961	931	813
Pre-trial prisoners	3,593	3,612	3,506	3,321

**Table 5b - Pre-trial admits, new offenders**

	July 2018	Aug. 2018	Sept. 2018	Sept. 2017
Arraignments	3,079	3,095	2,566	2,642
Pre-trial Admits	1,514	1,462	1,275	1,331
New to DOC	366	367	350	339
% New	24%	25%	27%	25%

**Court Support Services Division**

**Table 6 - The Jail Re-interview Program**

	Pre-trial admissions	Offender interviews	Offenders released	Released last year
July	1,514	1,007	325	508
Aug.	1,462	1,065	383	426
Sept.	1,275	862	314	392

**Table 6a - Pre-trial bail and probation caseloads**

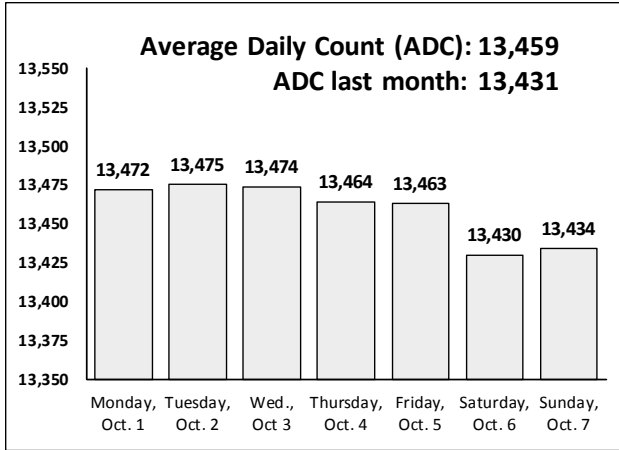
	Pre-trial Bail Case Starts	Client Supv. Starts	Split Sentence Starts	Pre-trial bail cases
July	2,055*	1,798	366	12,660*
Aug.	2,050*	2,070	385	12,650*
Sept.	2,050*	1,791	342	12,660*
Sept. '17	2,100*	1,720	368	12,700*

\* CSSD estimates

Note: Figures published here are based on the operational data available at the time of publication. Data in subsequent issues may not agree.

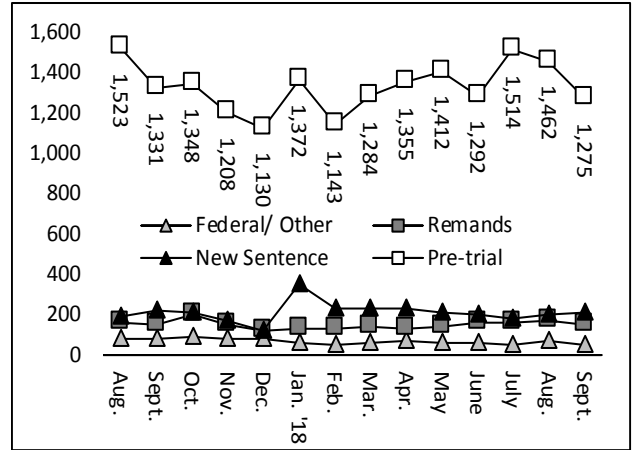
**Chart 3 – Prison population**

First week of the month, avg. daily count (ADC)



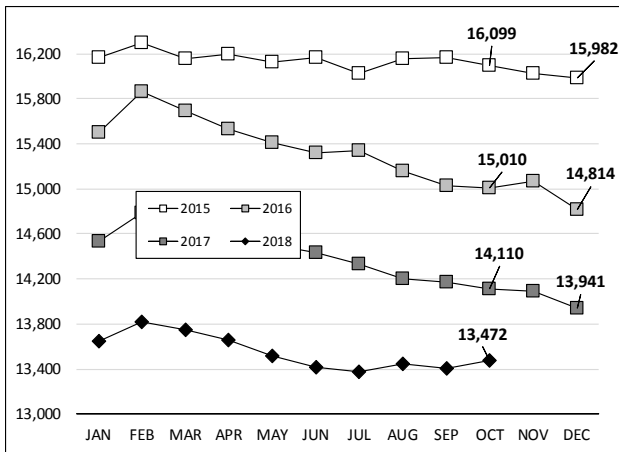
**Chart 6 – Monthly DOC Admissions**

Aug. 2017 through Sept. 2018



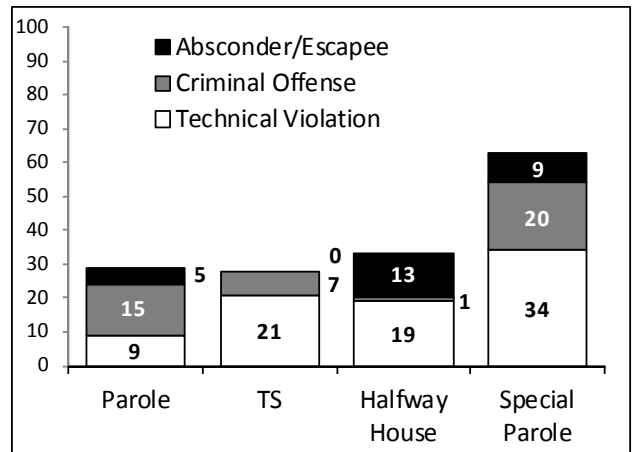
**Chart 4 – Prison population, first-of-month**

2015, 2016, 2017 and 2018



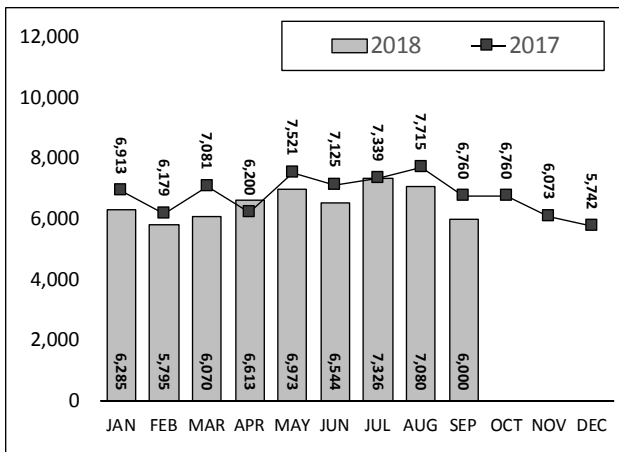
**Chart 7– Remands from community release**

September 2018



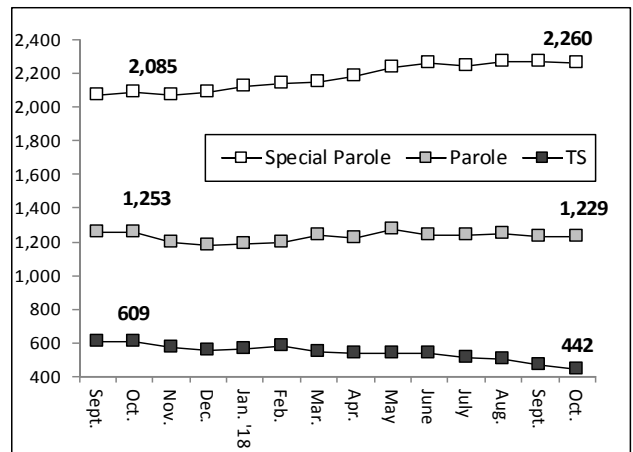
**Chart 5 – Statewide criminal arrests**

2017 and 2018



**Chart 8 – DOC community supervision**

Sept. 1, 2017 through Oct. 1, 2018



Note: Data for all charts, with the exception of Chart 5, was supplied by CT DOC. Data for Chart 5 are for new case starts in the state Criminal Motor Vehicle System (CRMVS). Chart 8 includes offenders in halfway houses.