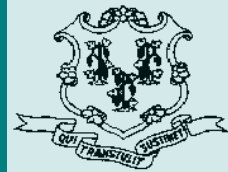


Criminal Justice Policy & Planning Division Monthly Indicators Report



RESEARCH, ANALYSIS & EVALUATION — WWW.CT.GOV/OPM/CriminalJustice/Research

Highlights

- Between April 1st and May 1st the prison population fell from 18,331 to 18,259 (See Chart 2). A year ago, on May 1st 2009, the prison population was 18,906.
- Statewide criminal arrests fell by almost 10%, between March and April (See Chart 5). The April 2010 figure was slightly lower than the three-year statewide average for arrests. Unsentenced admits to DOC facilities also declined last month although by a smaller margin than the decline in arrests.
- After declining for several months, the number of offenders on Transitional Supervision (TS) increased by 5.7% last month over the March figure. Monthly releases to TS in April rose to 272, an increase of almost 19% over 229 released in March.
- The number of offenders released on re-entry furloughs declined during the same period that TS releases were rising. This suggests that these two offender-release mechanisms are inversely related since there appears to be a significant overlap between furlough eligible offenders and short-term TS eligible offenders.
- The state's parole population has stabilized in recent months (See Chart 8).

The CJPAC Research Workgroup is currently reviewing and revising its collaborative research agenda for the coming year. The group hopes to present its recommendations to CJPAC within the next several months.

Prison Population Forecast

The state's prison population declined moderately during the month of April. The average daily count of prisoners during the first week of May was 18,265, thirty-five fewer than the figure for April.

OPM's prison-population estimate for the first week of May was approximately 0.6% lower than the actual figure in May. This gap could close within the next few months depending statewide arrest rates.

The period between May and October are most difficult months-of-the-year to model in terms of the prison population. Prison admits during the summer months are more dependent on new criminal arrests than at any other time of the year. Organized police sweeps can produce hundreds of new prison admits over the course of a few days. Although these spikes in the prison population generally subside quickly, as offenders post bail, these operations can tax short-term capacity at certain prison facilities and impact the standing prison-population count.

TABLE 1 –Prison Population Forecast

	Actual (*Avg Daily)	OPM 2010 Forecast
FEB '10	18,414*	-
MAR	18,309*	18,332
APR	18,300*	18,281
MAY	18,265*	18,161
JUN	-	18,156
JUL	-	18,155
AUG	-	18,180
SEP	-	18,323
OCT	-	18,411
NOV	-	18,305
DEC	-	18,129
JAN '11	-	17,738
FEB	-	18,009

* Average Daily Count, first week of month

CHART 1 – Total DOC Facility Population, Actual and Projected
January 1, 2009 through February 1, 2011

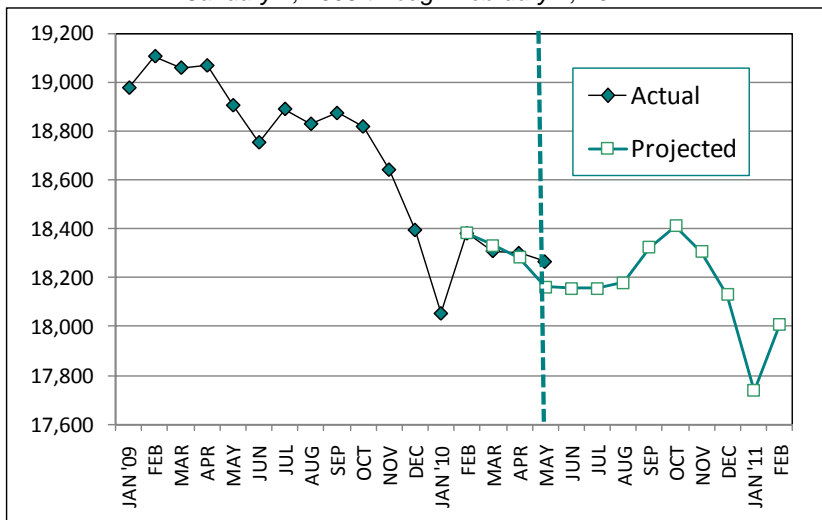
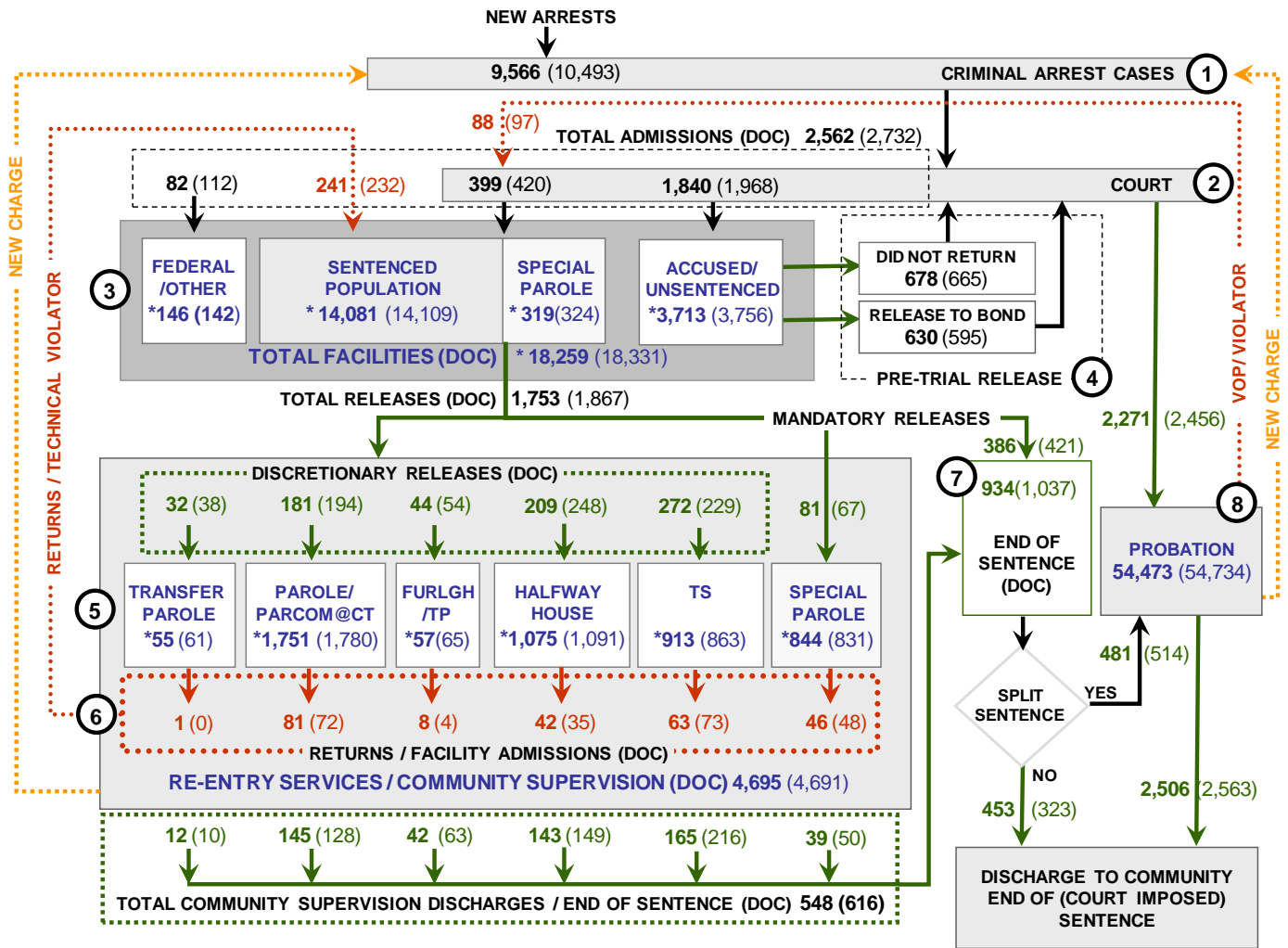


CHART 2 – Connecticut Criminal Justice System – Monthly Overview



Asterisks (*) indicate the single-day population count on May 1, 2010.
 Numbers enclosed by parentheses contain the previous month's figure.
 Data shown for New Split Sentence Probationers is approximate due to data reconciliation issues.
 Sources: Arrest-Judicial/Court Operations; Court-Judicial/CSSD; Facility/Community Supervision-DOC

Unlike states that have county governments, the majority of agencies within Connecticut's criminal justice system are State agencies. The one exception is law enforcement, where there are over 90 local police departments and the Connecticut State Police.

- 1) Arrest:** An individual enters into the criminal justice system at the time of arrest.
- 2) Court:** At arraignment, judges review the charges filed against the accused and set a bail amount. Individuals who cannot meet bail conditions are incarcerated in DOC facilities to await trial. If the defendant is convicted, they may be sentenced to a range of sanctions including a fine, probation, or a term of incarceration.
- 3) DOC Facilities:** Total facility population at DOC contains the unsentenced population, which is awaiting trial, the sentenced population, inmates who have returned from special parole, and offenders charged in federal cases or non-state cases.
- 4) Pre-Trial Release:** Some defendants who are incarcerated pending the disposition of their cases may be eligible for a bond reduction or placement into pre-trial diversionary programs or treatment programs. These programs feature close coordination and cooperation between DOC, CSSD and the Department of Mental Health and Addiction Services (DMHAS).
- 5) Re-Entry Services:** Depending on several factors, an inmate may be eligible to complete a portion of his/her prison sentence under supervision of the DOC's Parole and Community Services Unit. Non-violent Inmates with sentences shorter than two years are eligible for Transitional Supervision after serving 50% of their sentences. Inmates serving sentences longer than two years may be eligible for parole.
- 6) Returns:** Offenders who violate the conditions of their community release may be returned to prison to complete the remainder of their sentences.
- 7) End of Sentence (EOS):** At the end of their sentences some offenders are required to complete a period of post-release supervision. Split-sentence offenders are supervised by the Judicial Branch's Office of Adult Probation. Offenders sentenced to special parole remain under DOC supervision.
- 8) Violation of Probation:** If an individual violates the terms of their probation, an arrest warrant must be issued, and the violator's case is returned to court.

TABLE 2 –DOC Population Counts, First of the Month

	2010	2010	2010	2009	% Change	
	Mar. 1st	Apr. 1st	May 1st	May 1st	Monthly	Annual
DOC Facility						
Federal/Other	165	142	146	146	2.7%	0.0%
Sentenced	14,106	14109	14081	14,828	-0.2%	-5.0%
Special Parole	295	324	319	278	-1.6%	14.7%
Accused/Unsentenced	3,764	3756	3713	3,654	-1.2%	1.6%
Total	18,330	18,331	18,259	18,906	-0.4%	-3.4%
DOC Community						
Transfer Parole	53	61	55	74	-10.9%	-25.7%
Parole/ Parcom Total	1,777	1,780	1,751	1,447	-1.7%	21.0%
Parole	1,628	1,628	1,596	1,286	-2.0%	24.1%
Parcom @ CT	149	152	155	161	1.9%	-3.7%
Furlgh/Trans Place Total	66	65	57	40	-14.0%	42.5%
Furlough	41	43	38	0	-13.2%	-
Trans Placement	25	22	19	40	-15.8%	-52.5%
Halfway House Total	1,040	1,091	1,075	1,208	-1.5%	-11.0%
Comm Release	864	905	890	918	-1.7%	-3.1%
TS	23	21	16	155	-31.3%	-89.7%
Parole	87	98	99	77	1.0%	28.6%
Transfer Parole	0	0	1	0	-	-
Special Parole	66	67	69	58	2.9%	19.0%
TS Total	921	863	913	927	5.5%	-1.5%
Special Parole	847	831	844	812	1.5%	3.9%
Total	4,704	4,691	4,695	4,508	0.1%	4.1%

TABLE 3 – DOC Admissions and Releases, Monthly Totals

	2010	2010	2010	2009	% Change	
	Feb.	Mar.	Apr.	Apr.	Monthly	Annual
Admissions						
Federal/Other	72	112	82	120	-26.8%	-31.7%
Returns	216	232	241	249	3.9%	-3.2%
Transfer Parole	0	0	1	4	-	-
Parole	71	72	81	60	12.5%	35.0%
Trans Plac/Furlough	3	4	8	1	100.0%	-
HWH	42	35	42	46	20.0%	-8.7%
TS	57	73	63	96	-13.7%	-34.4%
Special Parole	43	48	46	42	-4.2%	9.5%
New Sentence	412	420	399	395	-5.0%	1.0%
VOP	106	97	88	110	-9.3%	-20.0%
Accused	1,568	1,968	1,840	1,848	-6.5%	-0.4%
Total	2,268	2,732	2,562	2,612	-6.2%	-1.9%
Releases						
Transfer Parole	28	38	32	16	-15.8%	100.0%
Parole	177	194	181	178	-6.7%	1.7%
Trans Plac/Furlough	72	54	44	18	-18.5%	144.4%
HWH	185	248	209	200	-15.7%	4.5%
TS	205	229	272	338	18.8%	-19.5%
Special Parole	54	67	81	74	20.9%	9.5%
End of Sentence	884	1,037	934	1,008	-9.9%	-7.3%
Total	1,605	1,867	1,753	1,832	-6.1%	-4.3%
Pre-trial Releases*						
Did not return from Court	543	665	678	728	2.0%	-6.9%
Release to Bond	586	595	630	563	5.9%	11.9%

*Measured by occurrence, not by individual.

Parole

Paroles and Parole hearings

The Board considered 278 parole cases at full panel hearings during April. In 221 cases, offenders were granted parole dates; in 57 cases, parole was denied. In addition there were 110 parole violation hearings, resulting in 82 offenders being reparaoled; 54 for revocations and 28 for rescissions.

TABLE 4A –Paroles Granted, April 2010:221

	Hearings	Granted	Rate
FEB	249	187	75%
MAR	271	197	73%
APR	278	221	79%

Data Notes: Figures are based on the data available at the time of this report. Data in subsequent issues may not agree.

The Board is moving towards scheduling dates for parole hearing up to 18 months before an offender's eligibility date. This should allow the Board to have a greater effect on offender programming while the offender remains incarcerated. It should also provide DOC with more time to develop a successful reintegration plan for each offender. If properly implemented, this change should reduce the number of offenders that are incarcerated beyond their parole eligibility dates.

TABLE 4B –Transfer Paroles, April 2010

	Reviewed	Granted	Denied	Continued	Rate
DEC	299	53	163	83	18%
JAN '10	180	32	81	67	18%
FEB	275	73	135	67	27%

Probation

Total Court Support Services Division caseload for April 2010: 54,473

TABLE 5 – Monthly CSSD Direct Sentenced & Probationer Community Placements

	Community Based	Out-patient	Inpatient/ Resident	Total
JAN '10	1,447	1,043	15	2,505
FEB	1232	984	22	2,238
MAR	1562	1110	27	2,699

Data Notes: Figures are based on the latest data available at publication time. Figures in subsequent issues may not agree with those published here.

Pre-trial Diversion and Supervision

TABLE 6 – Pre-trial Diversion & Supervision

	Pre-trial Bail Case Starts	Client Supv. Starts
FEB	2,273	2,117
MAR	2,997	2,456
APR	2,854	2,271

CHART 3 – Snapshot Daily DOC Facility Population
May 1, 2010 to May 7, 2010

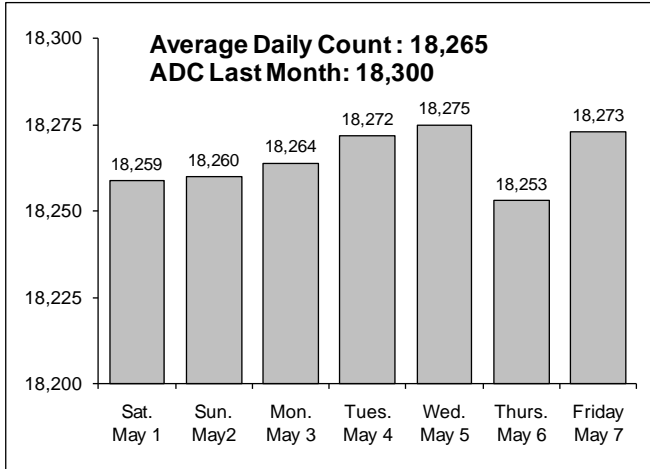


CHART 6 – Monthly DOC Admissions by Type
April 2009 to April 2010

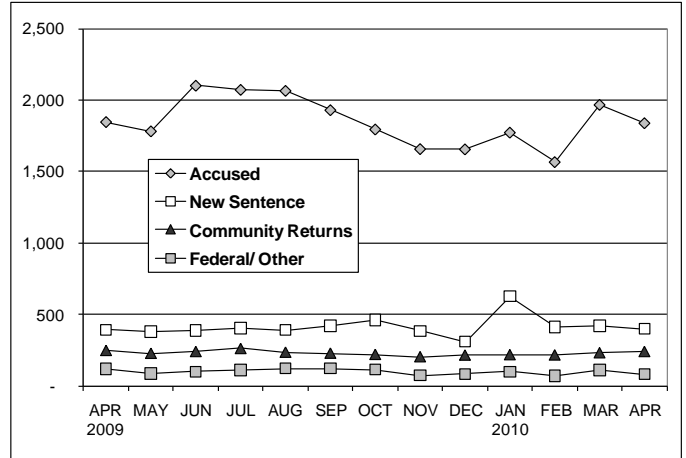


CHART 4 – Monthly Prison Population
January 1 through December 1, Calendar Year

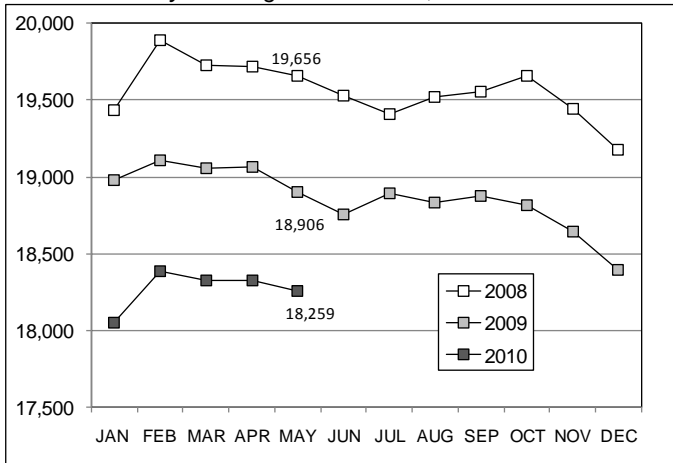


CHART 7 – Monthly Readmissions from Community Release
April 2010

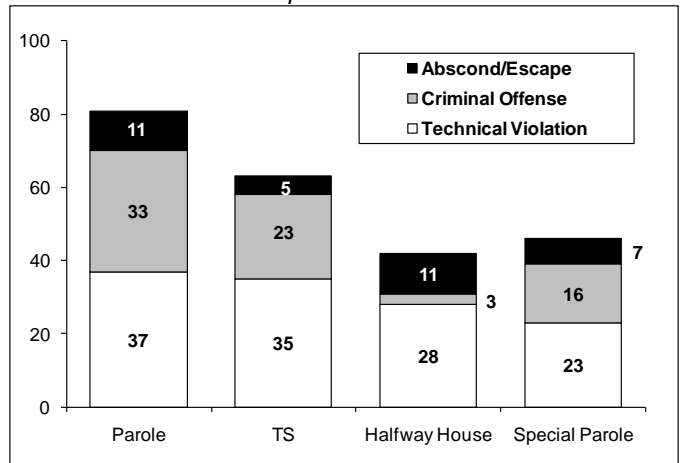


CHART 5 – Monthly criminal arrests, statewide
Monthly in 2010 v. three year monthly average

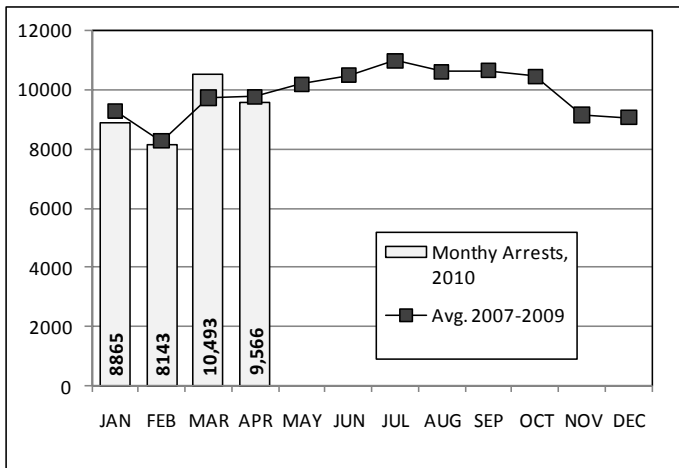
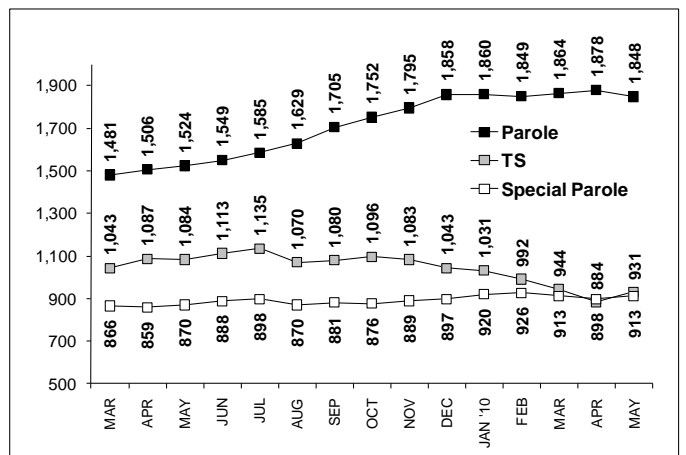


CHART 8 – Parole, TS and Special Parole, supervised cases
March 1, 2009 to May 1, 2010



* Data for all charts except Chart 5 was supplied by CT DOC
Data for Chart 5 was provided by Court operations at the Judicial Branch
**Data in Chart 8 include all offenders under parole jurisdiction
May 2010 – Monthly Indicators