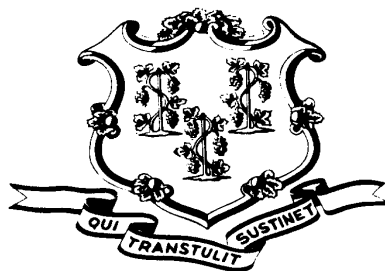


Criminal Justice

Policy & Planning Division



Patterns of change in statewide arrests and pre-trial admissions: 2008 through 2015



Presented to:

Criminal Justice Policy Advisory Commission
November 19, 2015

Research and Evaluation Unit, Criminal Justice Division, OPM, Kuzyk

Significant changes in arrests and incarcerations since 2008

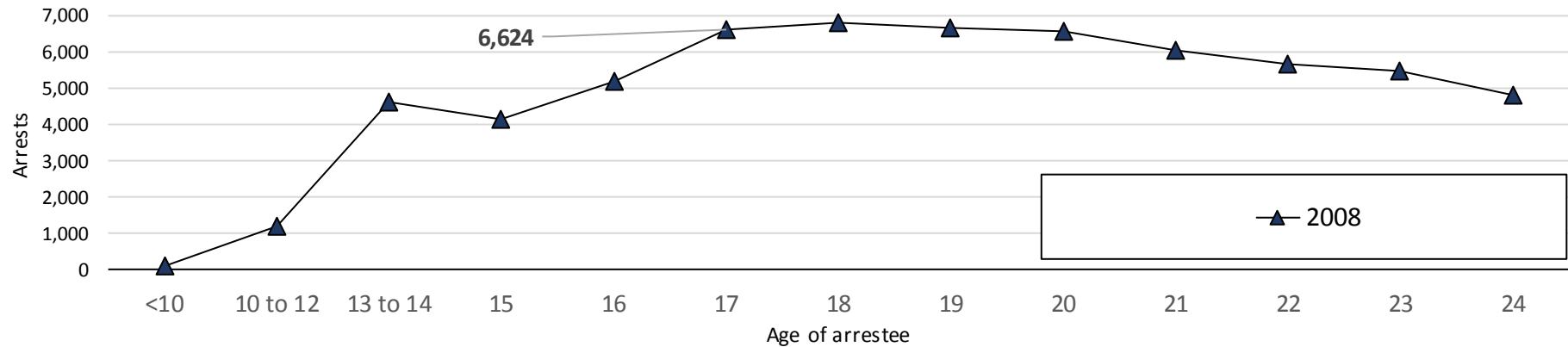
Factors

- Declining crime rates
- Raise-the-age legislation
- Fewer people entering the system

Today's presentation

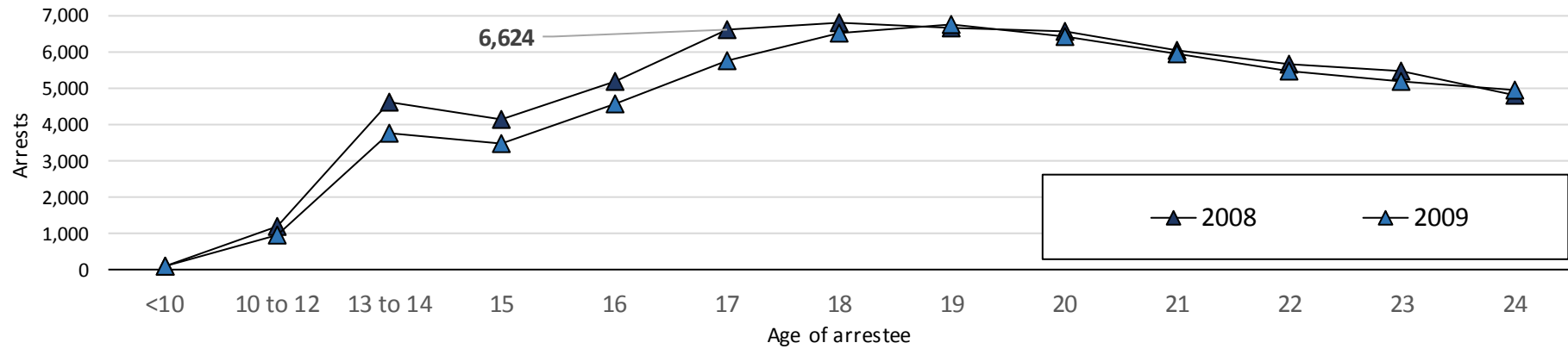
- Changes in arrest patterns among youth and by age cohort
- Pre-trial admissions to prison
 - New persons admitted to prison
 - Age, race, gender
- Trends in pre-trial prisoner bonds

Arrests by age – 2008 through 2014



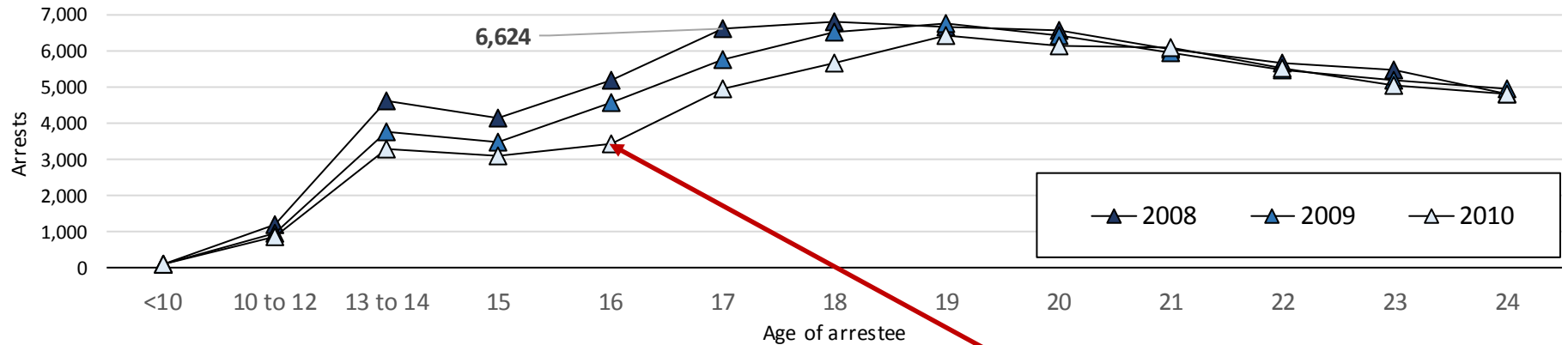
- **Statewide arrests (adult and juvenile) by age in 2008**
- **Source: Crime in Connecticut, annual reports by the CT State Police**
- **Most 15-year olds arrested in 2008 were born in 1993**

Arrests by age



- **In 2009, arrests among youth under 18 were down significantly**

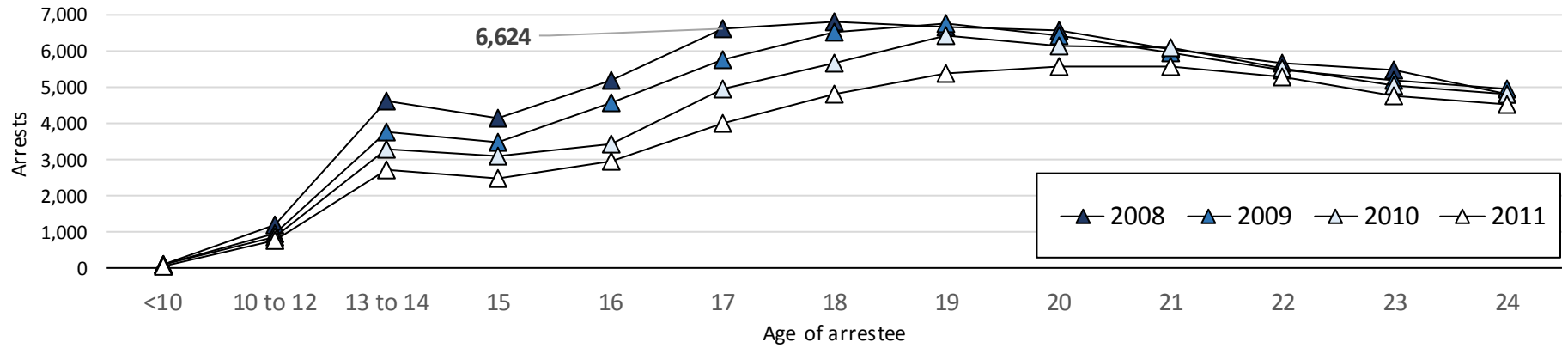
Arrests by age



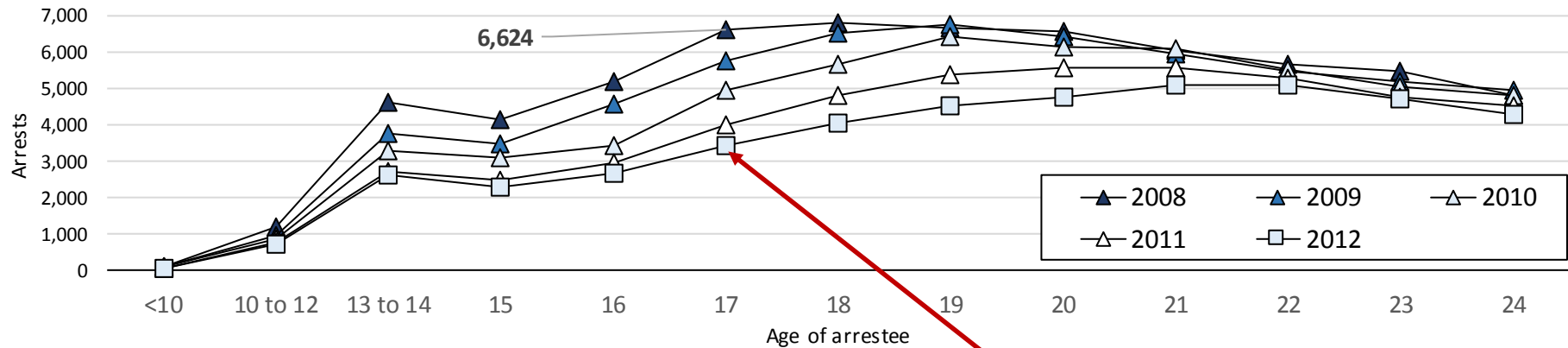
Raise the age: 16 year olds January 1, 2010

- In 2010, arrests kept declining particularly among 16-, 17- and 18-years olds.

Arrests by age



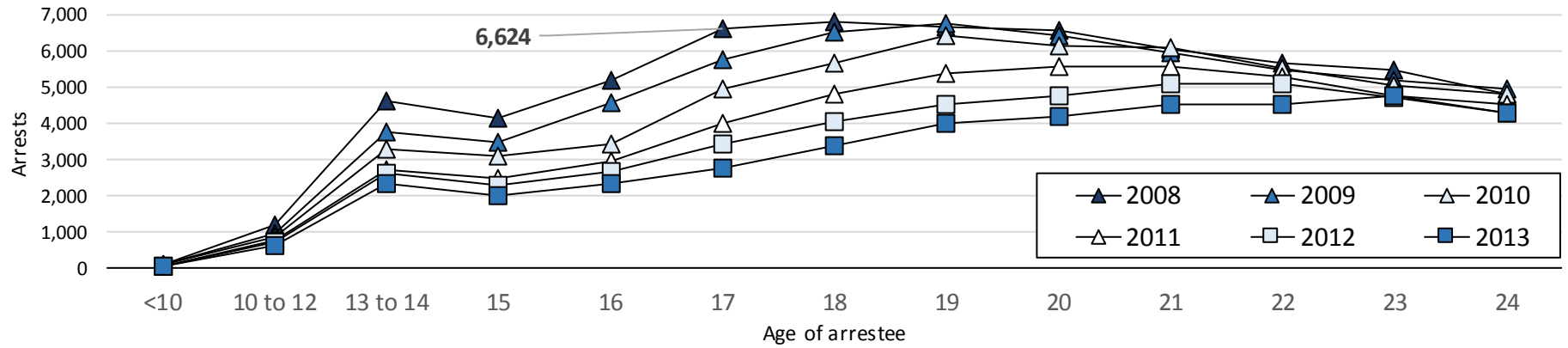
Arrests by age



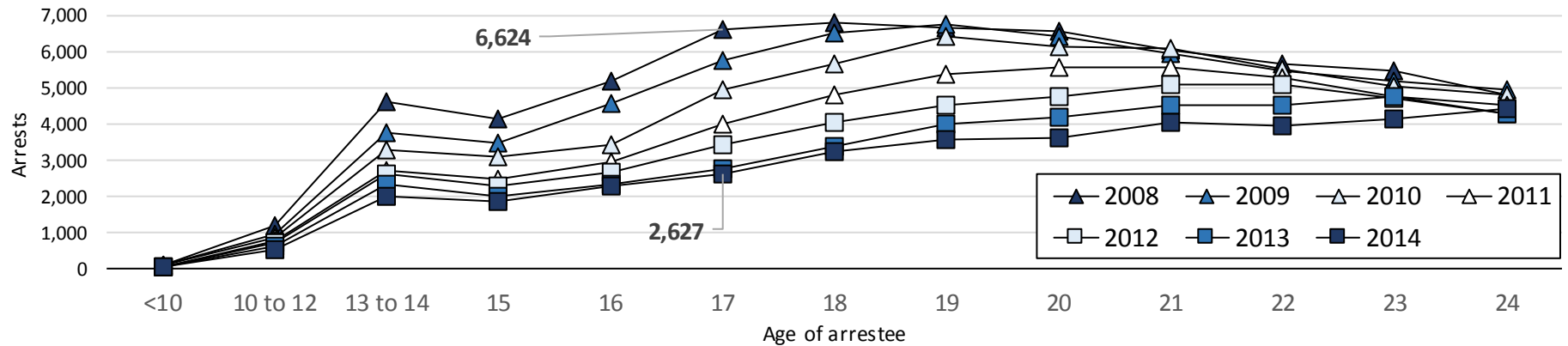
Raise the age: 17-year olds July 1, 2012

- **By 2012, arrests among youth aged 18-, 19- and 20-year old were down significantly**

Arrests by age



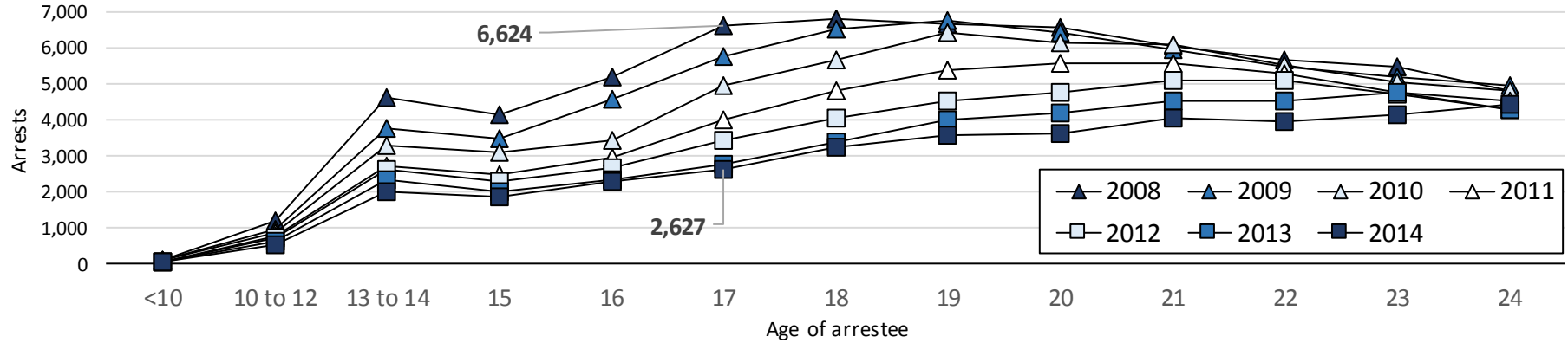
Arrests by age



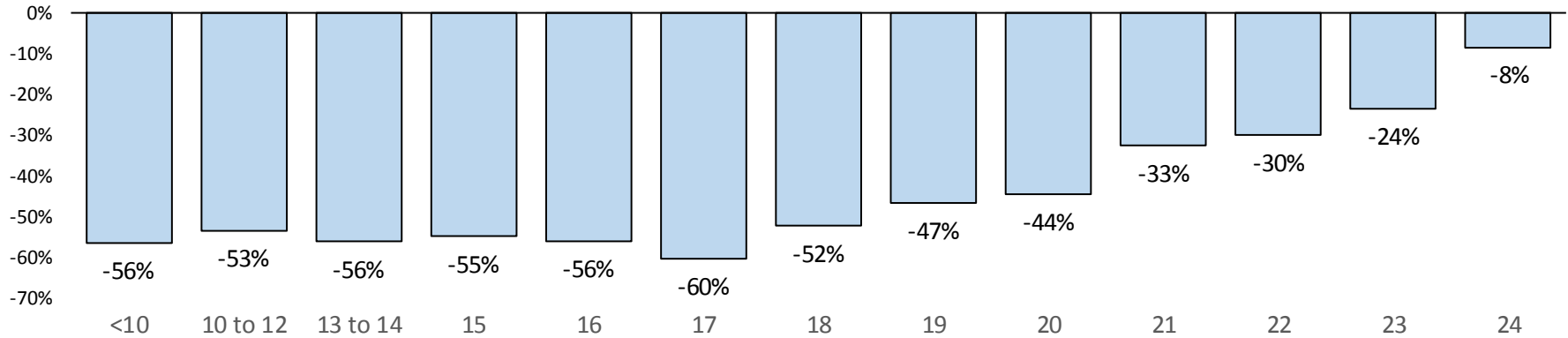
- **By 2014, the drop in arrests was edging towards older youth.**

Arrests by age

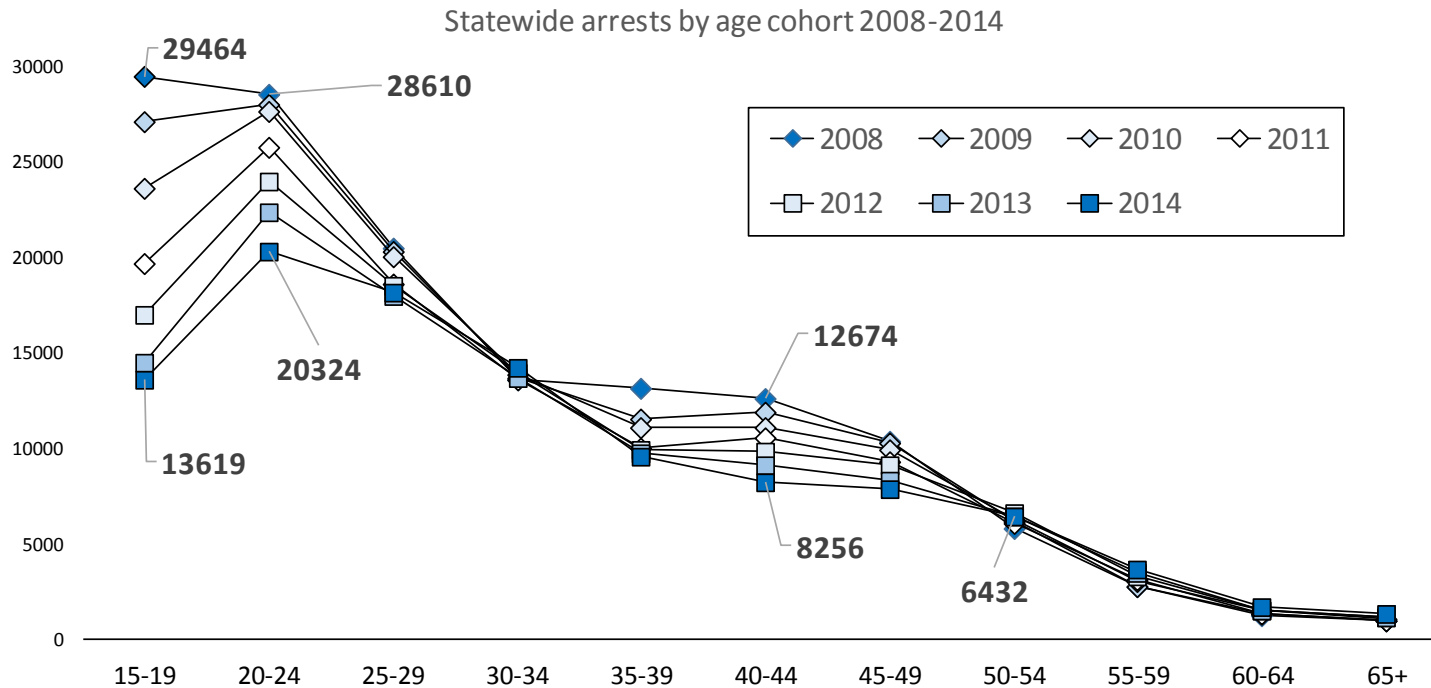
Change in statewide arrests by age 2008 to 2014



Percent change in statewide arrests by age 2008 to 2014



Arrests by age, 15-19 through 65+

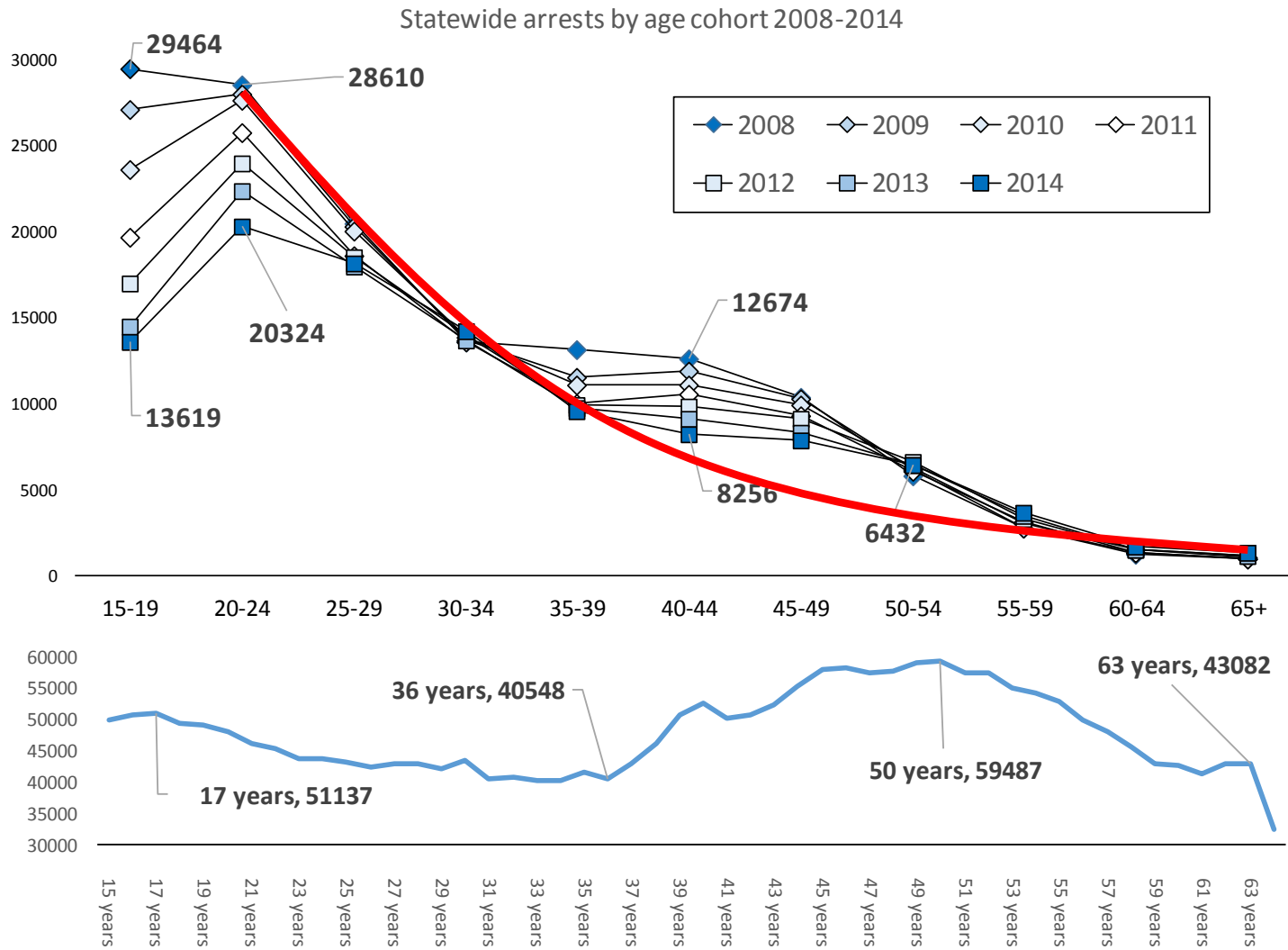


We observed that arrests among younger, offender cohorts declined most. Older age cohorts, actually, grew.

15-19	20-24	25-29	30-34	35-39	40-44	45-49	50-54	55-59	60-64	60+
-54%	-29%	-11%	5%	-28%	-35%	-24%	10%	32%	34%	30%

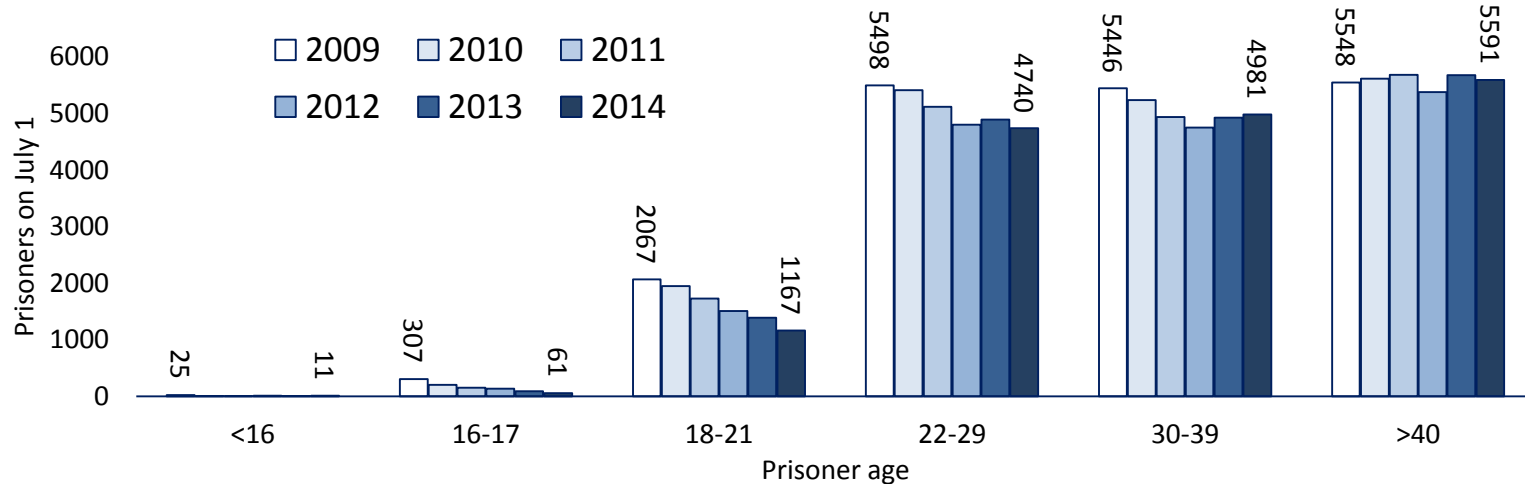
.. and then we observed a spread among those aged 35 to 50.

Arrests by age, 15-19 through 65+



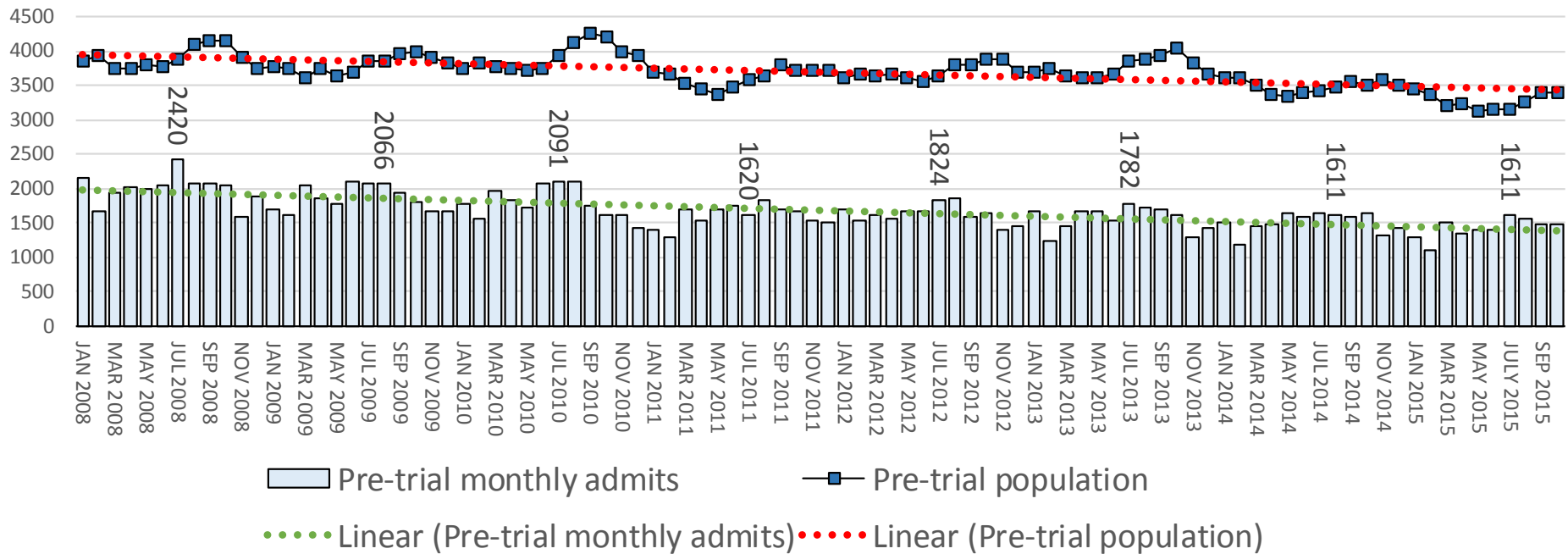
2010 Census data

CT DOC prisoners by age group



Change in the size of the prisoner population by age group, July 1							
Age	2009	2010	2011	2012	2013	2014	% change, 2009 to 2014
<16	25	10	9	15	8	11	-56%
16-17	307	207	152	136	92	61	-80%
18-21	2067	1952	1732	1510	1391	1167	-44%
22-29	5498	5413	5120	4802	4894	4740	-14%
30-39	5446	5235	4937	4750	4927	4981	-9%
>40	5548	5614	5681	5378	5676	5591	1%
Total	18891	18431	17631	16591	16988	16551	-12%

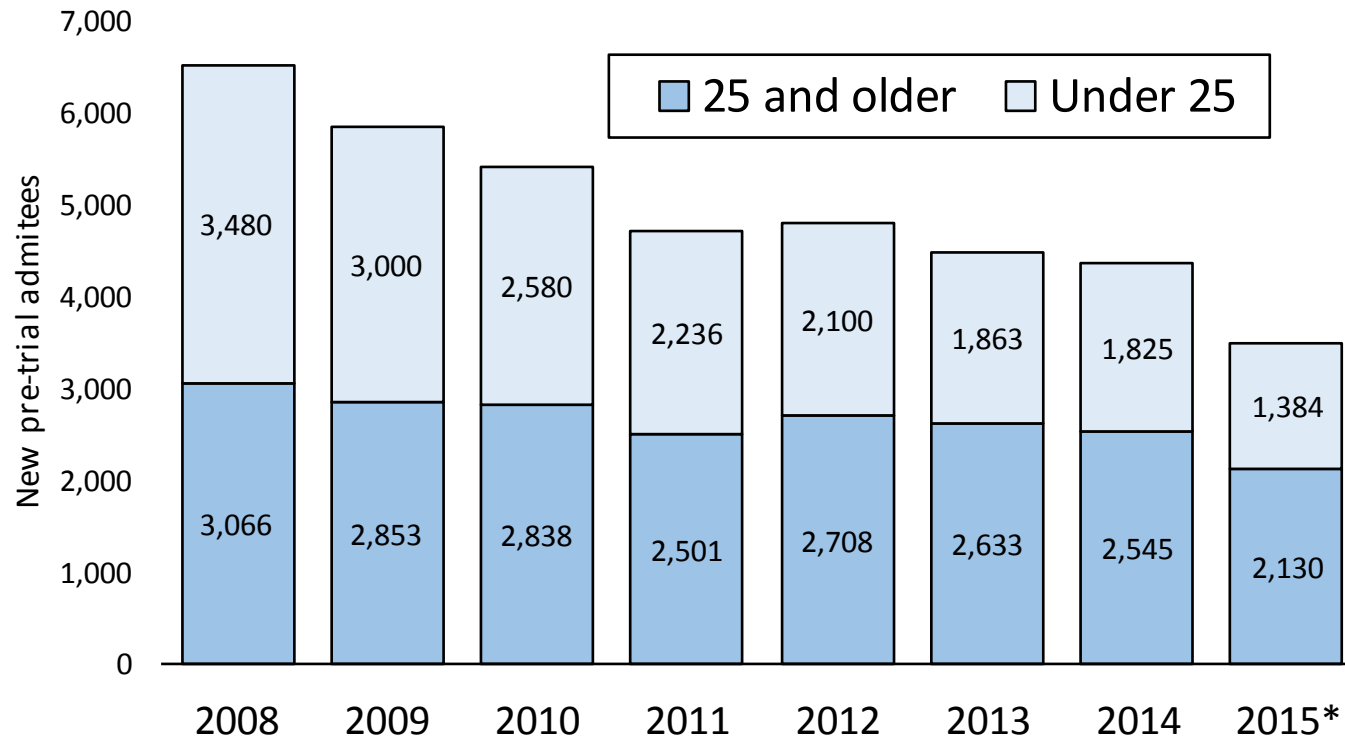
CT DOC: Monthly pre-trial admissions and pre-trial population



Discounting seasonal variations, the pre-trial, prison population and the number of persons admitted to prison on a pre-trial basis has been declining steadily since 2008.

Of persons admitted to prison in pre-trial status each month only about 25% are new to the prison system.

New persons admitted to the CT DOC on pre-trial status



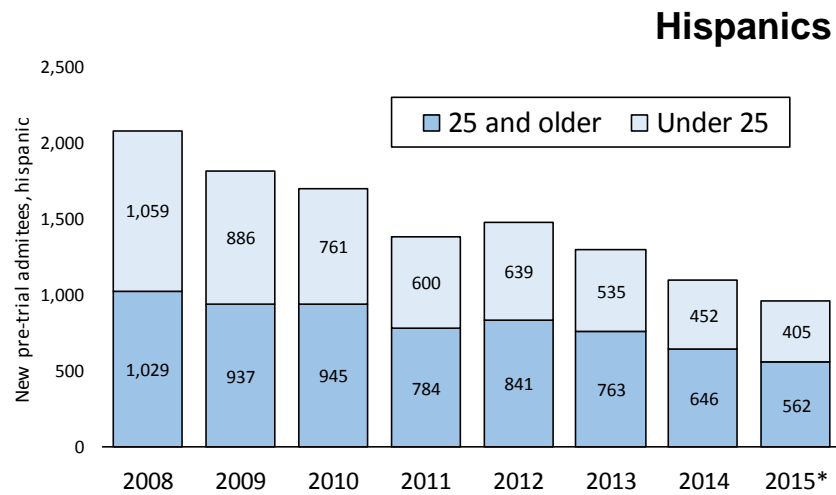
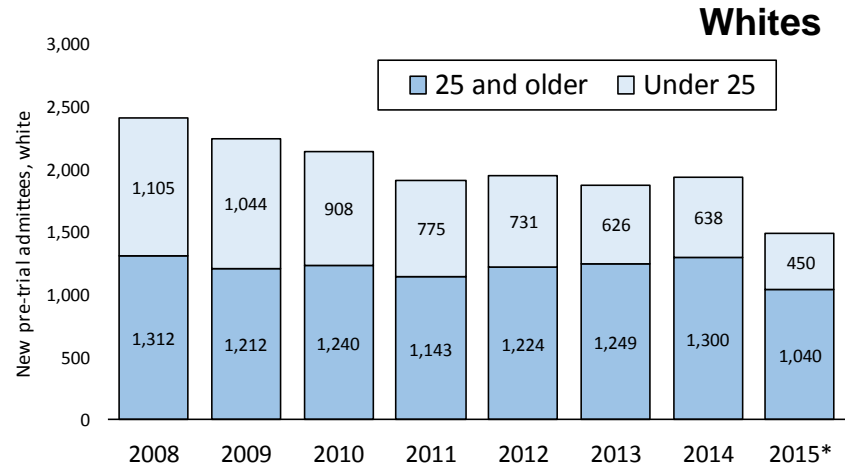
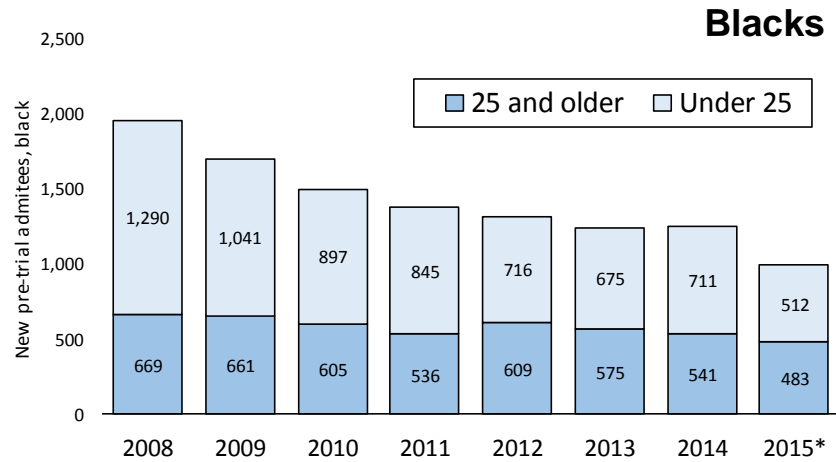
Percent change in the number of new persons admitted to DOC on pre-trial status, 2008 to 2014:

All persons: -33% (6,546 to 4,370)

Persons under 25: -48% (3,480 to 1,825)

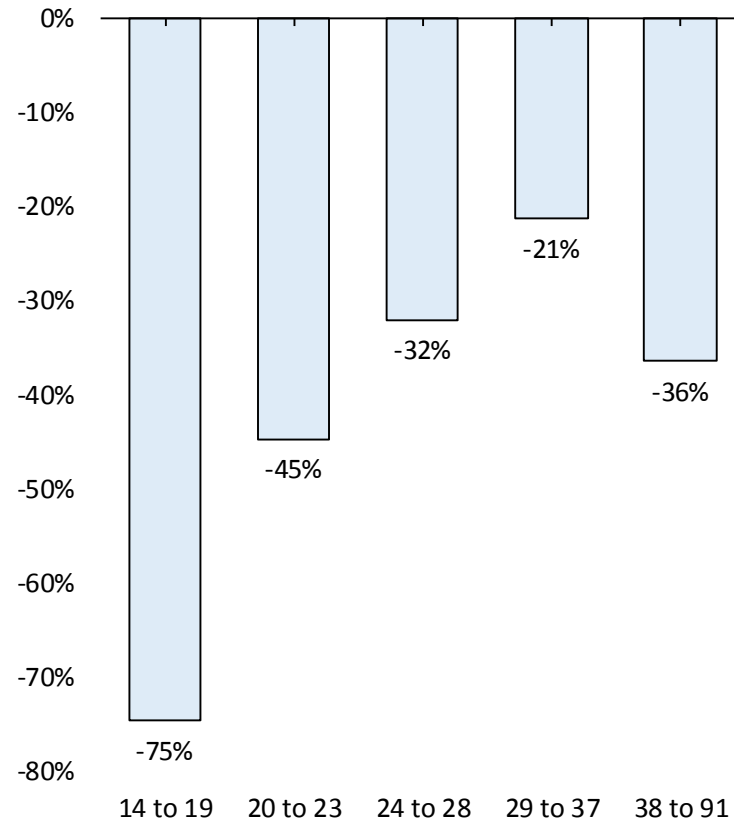
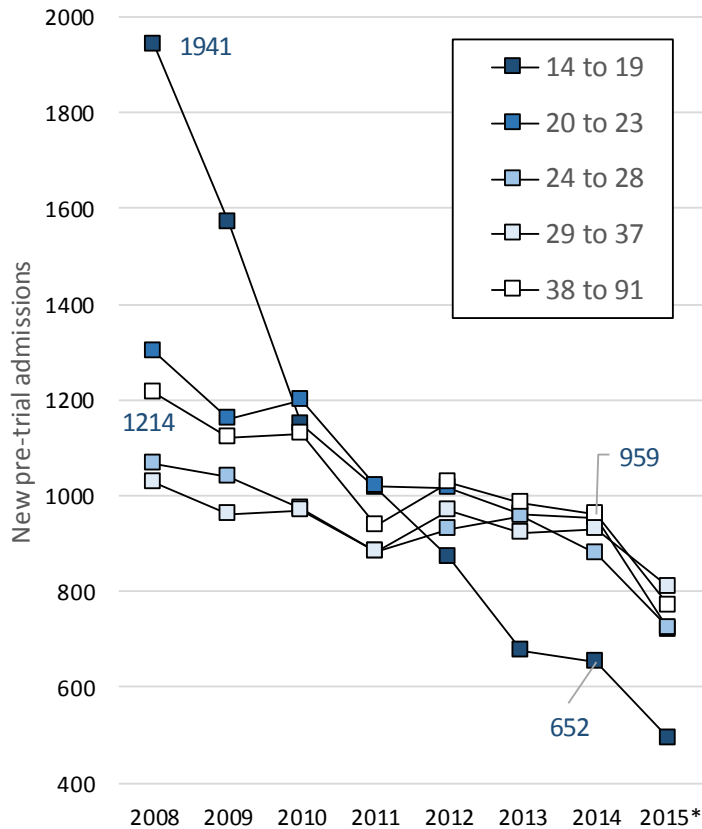
Persons 25 and older: -17% (3,066 to 2,545)

New persons admitted to the CT DOC on pre-trial status



		New admits		
Under 25	2008	2014	% change	
Blacks	1,290	711	-45%	
Whites	1,105	638	-42%	
Hispanics	1,059	452	-57%	
All	3,480	1,825	-48%	
		New admits		
25 and older	2008	2014	% change	
Blacks	669	541	-19%	
Whites	1,312	1,300	-1%	
Hispanics	1,029	646	-37%	
All	3,066	2,545	-17%	

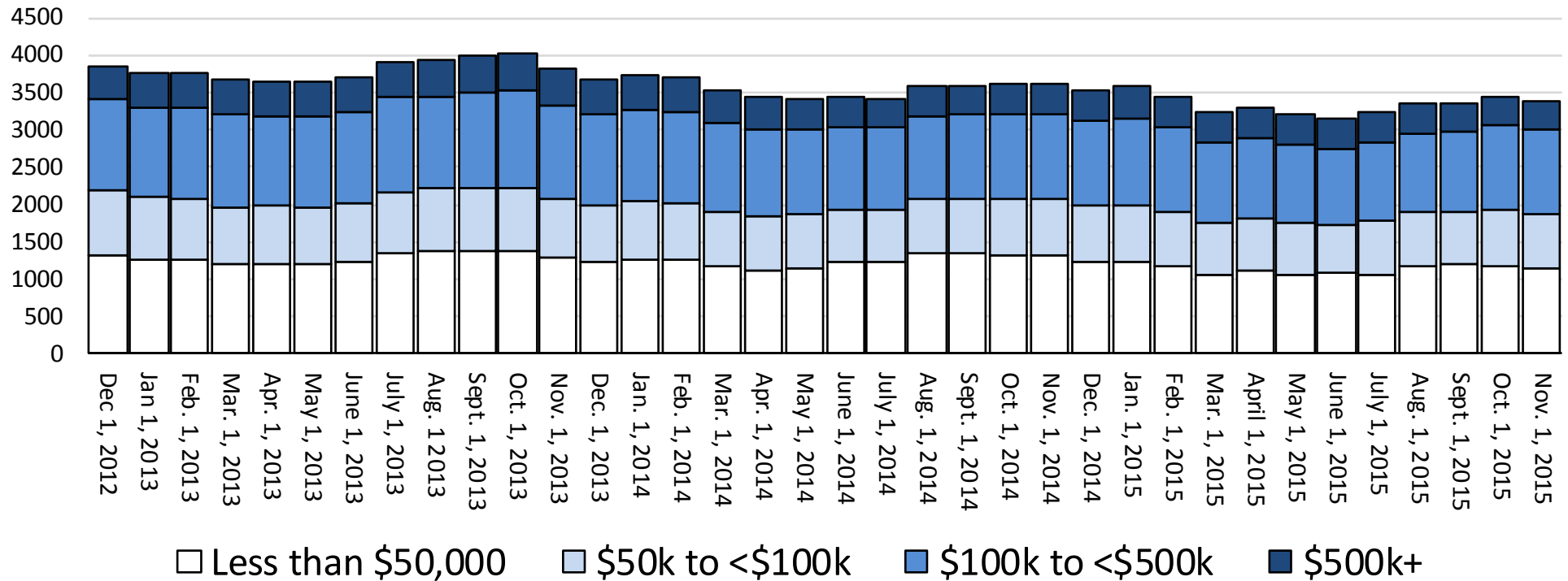
New persons admitted to the CT DOC on pre-trial status, age quintiles



Here is a bit more detail – new admits by age quintile. Changes in behavior and changes in policy.

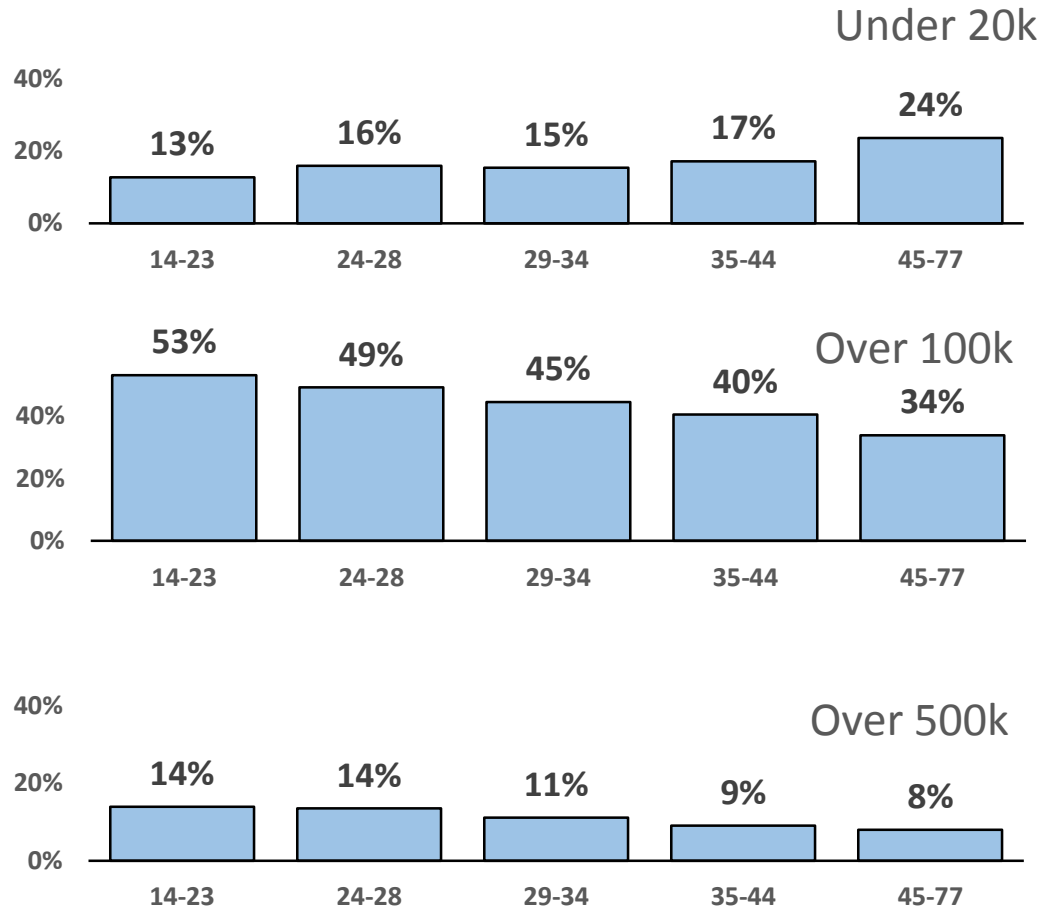
**** 38 to 91 quintile: 51% were 45 or younger; 98% were 65 or younger**

Bond spread – December 2012 through November 2015



About one-third (approximately 33%) of pre-trial prisoners have bonds under \$50,000; 17% to 20% have bonds under \$20,000.

Bond Amounts and Age of Pretrial Offenders*



Age of Pretrial Offender by Bond

Bond	14-23	24-28	29-34	35-44	45-77
<20k	86	118	107	118	161
20-50k	89	118	126	135	145
50-100k	140	139	151	154	142
100-500k	264	264	231	215	176
>500k	94	100	77	62	54
Total	673	739	692	684	678

*Data from 11/17/2015

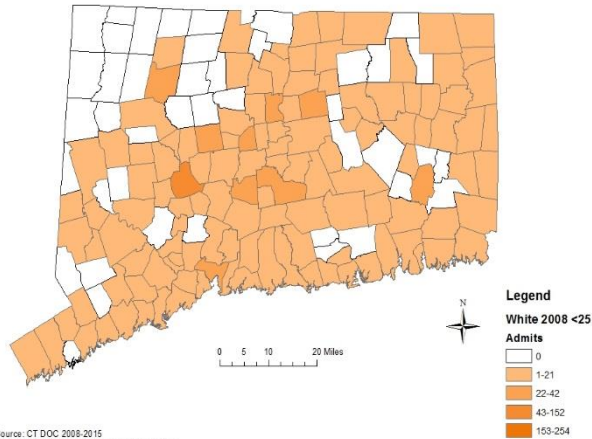
New pre-trial admits 2008 and 2014 by race/ethnicity, town of residence

White

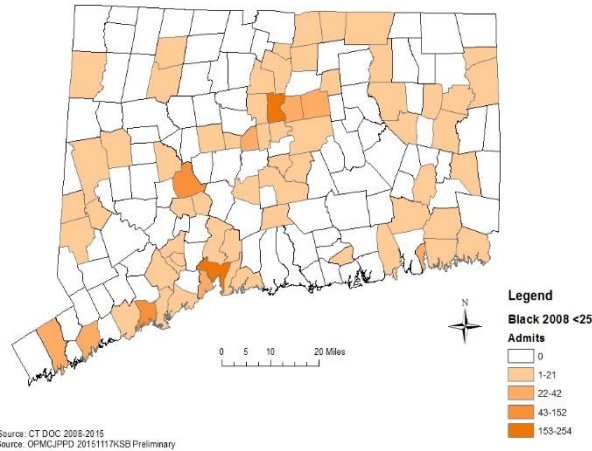
Black

Hispanic

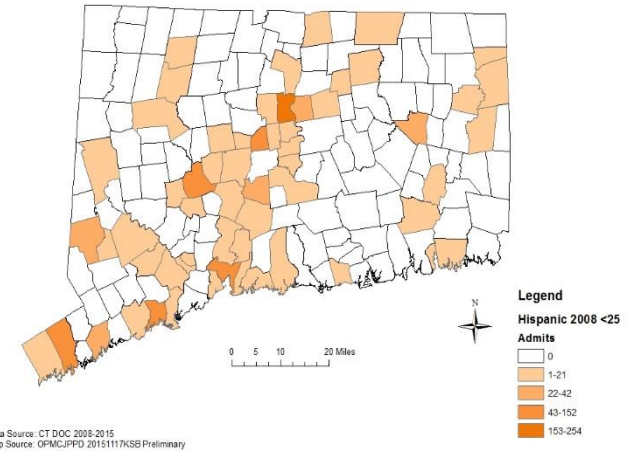
New persons under 25 admitted pre-trial in 2008, Whites



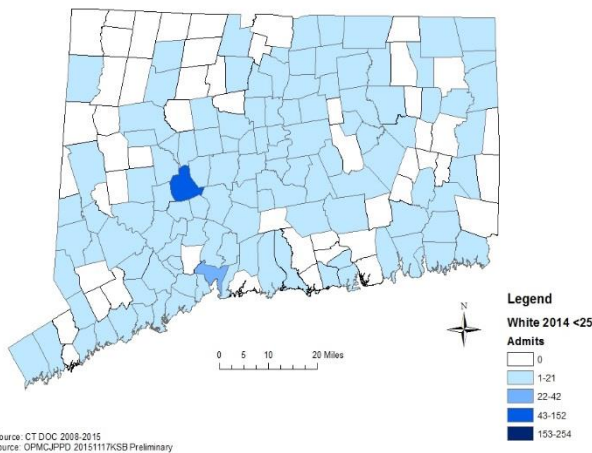
New persons under 25 admitted pre-trial in 2008, Blacks



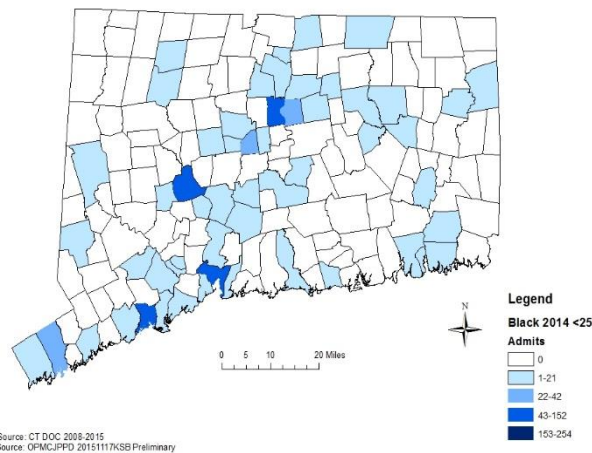
New persons under 25 admitted pre-trial in 2008, Hispanics



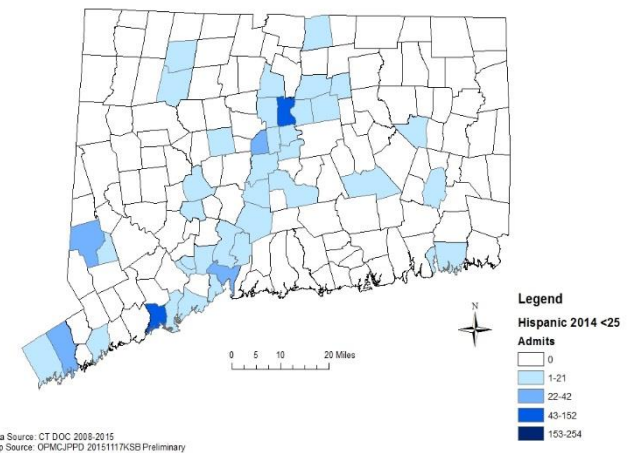
New persons under 25 admitted pre-trial in 2014, Whites



New persons under 25 admitted pre-trial in 2014, Blacks



New persons under 25 admitted pre-trial in 2014, Hispanics



New pre-trial admits 2008 and 2014 by race/ethnicity, town of residence

Fewer young admits from fewer places.

Hometowns, under 25, admits

	Home towns	
	2008	2014
Blacks	68	55
Whites	126	110
Hispanics	59	41

Top 5 hometowns reported by under-25, new pre-trial admits

Admits in 2008		New admits 2014	
ResidentTown	Blacks	ResidentTown	Blacks
NEW HAVEN	254	HARTFORD	113
HARTFORD	242	NEW HAVEN	108
BRIDGEPORT	152	BRIDGEPORT	84
WATERBURY	92	WATERBURY	57
STAMFORD	42	STAMFORD	35
All blacks, under 25	1290	All blacks, under 25	711
% top 5 towns	61%	% top 5 towns	56%

ResidentTown	Hispanics	ResidentTown	Hispanics
HARTFORD	201	HARTFORD	105
WATERBURY	104	BRIDGEPORT	50
BRIDGEPORT	97	NEW BRITAIN	37
NEW BRITAIN	97	NEW HAVEN	26
NEW HAVEN	82	DANBURY	25
All hispanics, under 25	1059	All hispanics, under 25	452
% top 5 towns	55%	% top 5 towns	54%

ResidentTown	Whites	ResidentTown	Whites
WATERBURY	48	WATERBURY	43
MERIDEN	37	NEW HAVEN	36
NEW HAVEN	35	BRISTOL	21
HARTFORD	34	MERIDEN	19
MANCHESTER	34	MANCHESTER	17
All whites, under 25	1105	All whites, under 25	638
% top 5 towns	17%	% top 5 towns	21%

OFFICE OF POLICY & MANAGEMENT

Criminal Justice

Policy & Planning Division



Presented by:

**Ivan Kuzyk
Research and Evaluation Unit
CJPPD, CT OPM**

ivan.kuzyk@ct.gov
(860) 418-6238