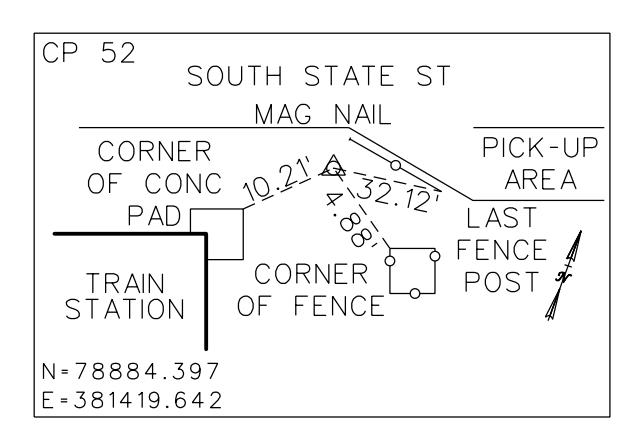
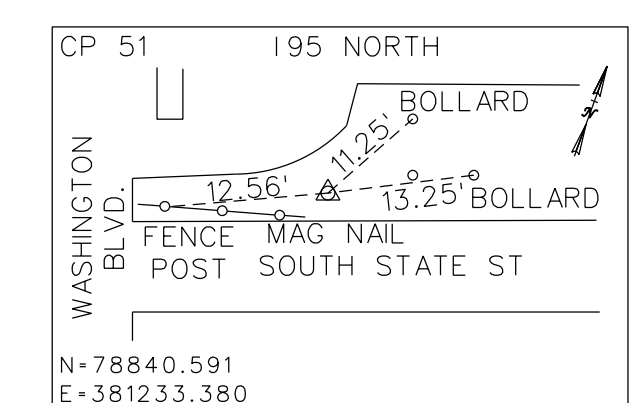
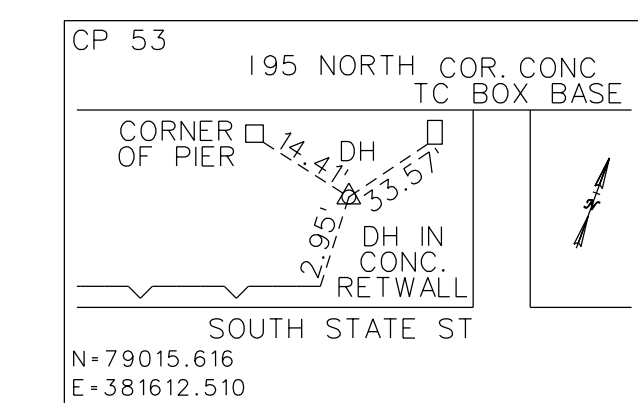


B.M. 100 Elev. 23.987
CHISEL SQUARE IN THE TOP OF CONCRETE RET WALL
NAVD 1988



B.M. 101 Elev. 31.394
CHISEL SQUARE IN THE CORNER OF CONCRETE RET WALL
NAVD 1988



B.M. A Elev. 24.947
CHISEL SQUARE IN THE TOP OF CONCRETE RET WALL
NAVD 1988

B.M. 102 Elev. 17.007
CHISEL SQUARE IN THE CENTERLINE OF CONCRETE RAILROAD OVERPASS
NAVD 1988

V 53.60
22

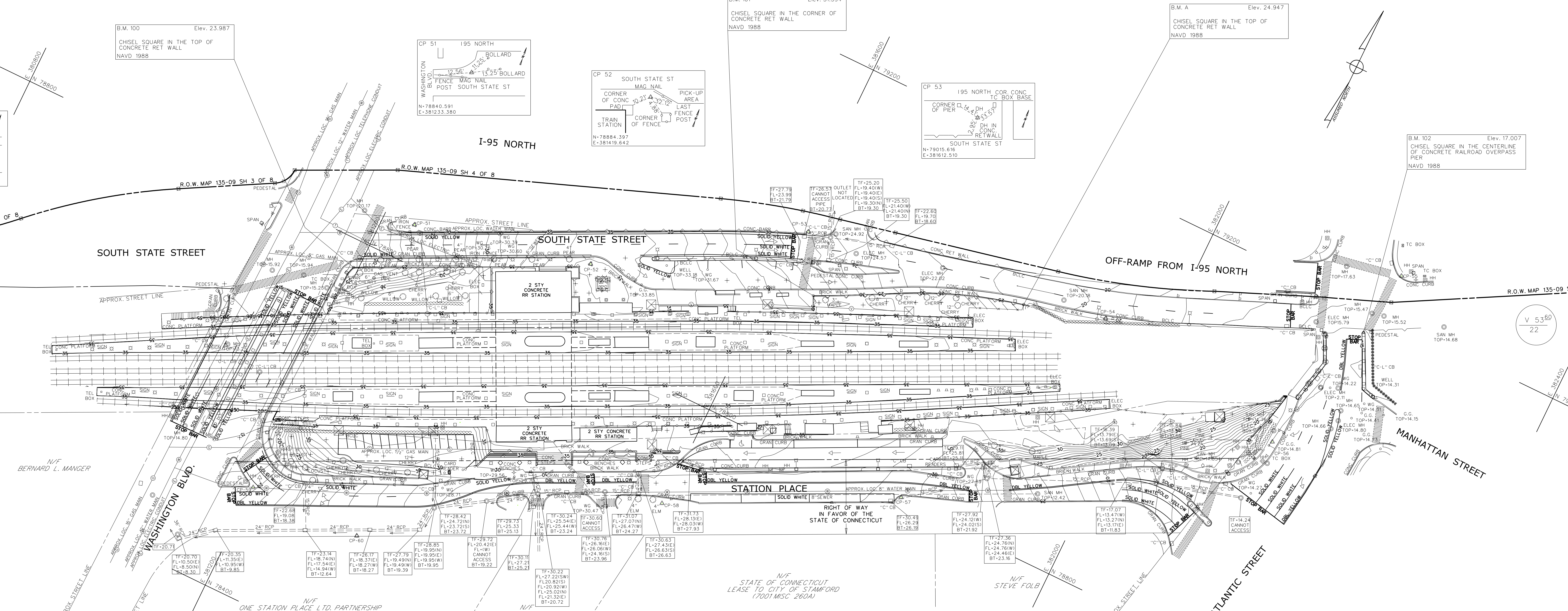
V 53.60
22

N 78400
E 382800

N 79200
E 382400

N 78800
E 382000

N 78400
E 382800

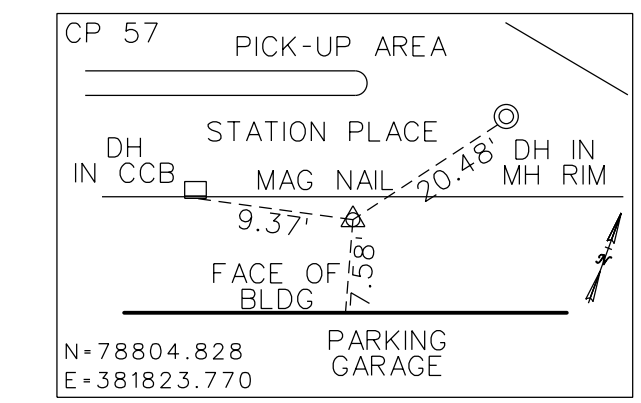
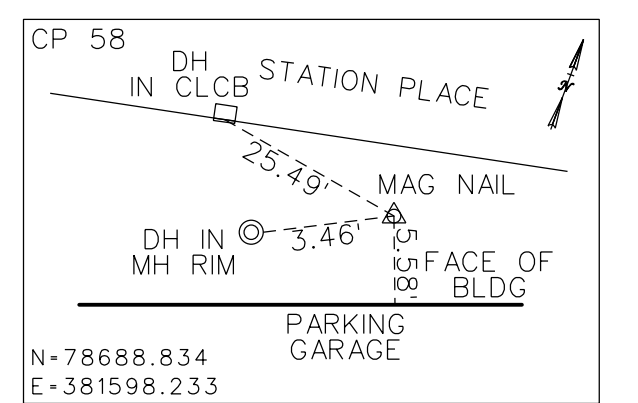


N/F BERNARD L. MANGER
N/F ONE STATION PLACE LTD. PARTNERSHIP
N/F STATE OF CONNECTICUT LEASE TO CITY OF STAMFORD (7001MSC 260A)

N/F STATE OF CONNECTICUT LEASE TO CITY OF STAMFORD (7001MSC 260A)

N/F STATE OF CONNECTICUT LEASE TO CITY OF STAMFORD (7001MSC 260A)

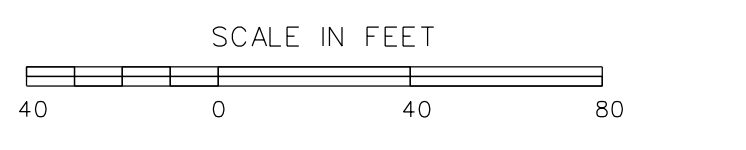
N/F STEVE FOLB



- NOTES:
- 1.) SURVEY BY CONDOT DISTRICT 4.
 - 2.) FIELD BOOKS: STAMFORD - LOCATION BOOK & DATA COLLECTION.
 - 3.) 400 FOOT GRID BASED ASSUMED DATUM.
 - 4.) VERTICAL DATUM BASED ON NAVD 88
 - 5.) PROPERTY LINES ARE TAKEN FROM TOWN OF STAMFORD TAX ASSESSORS' MAPS. NOT ALL HAVE BEEN FIELD VERIFIED AND SHOULD BE CONSIDERED APPROXIMATE.
 - 6.) UTILITIES SHOWN WERE TAKEN FROM PROJECT 135-206 AND FIELD LOCATED WHEN POSSIBLE.
 - 7.) ASSUMED NORTH ARROW TAKEN FROM PROJECT 135-206.

STATE OF CONNECTICUT
DEPARTMENT OF TRANSPORTATION
STAMFORD RAIL STATION
PARKING LOT
IN THE TOWN OF
STAMFORD

PROJECT NO. 300-148



SURVEYED BY: ROGER NEUHAUSSER
PLOTTED BY: PATRICK MCGUIRE
CHECKED BY: DOUG WIEGERT
FILE: SV_D4_300_0148_STAMFORD_GRN.dgn

DECEMBER 2011

REVISIONS			
NO.	DATE	DESCRIPTION	REV. BY