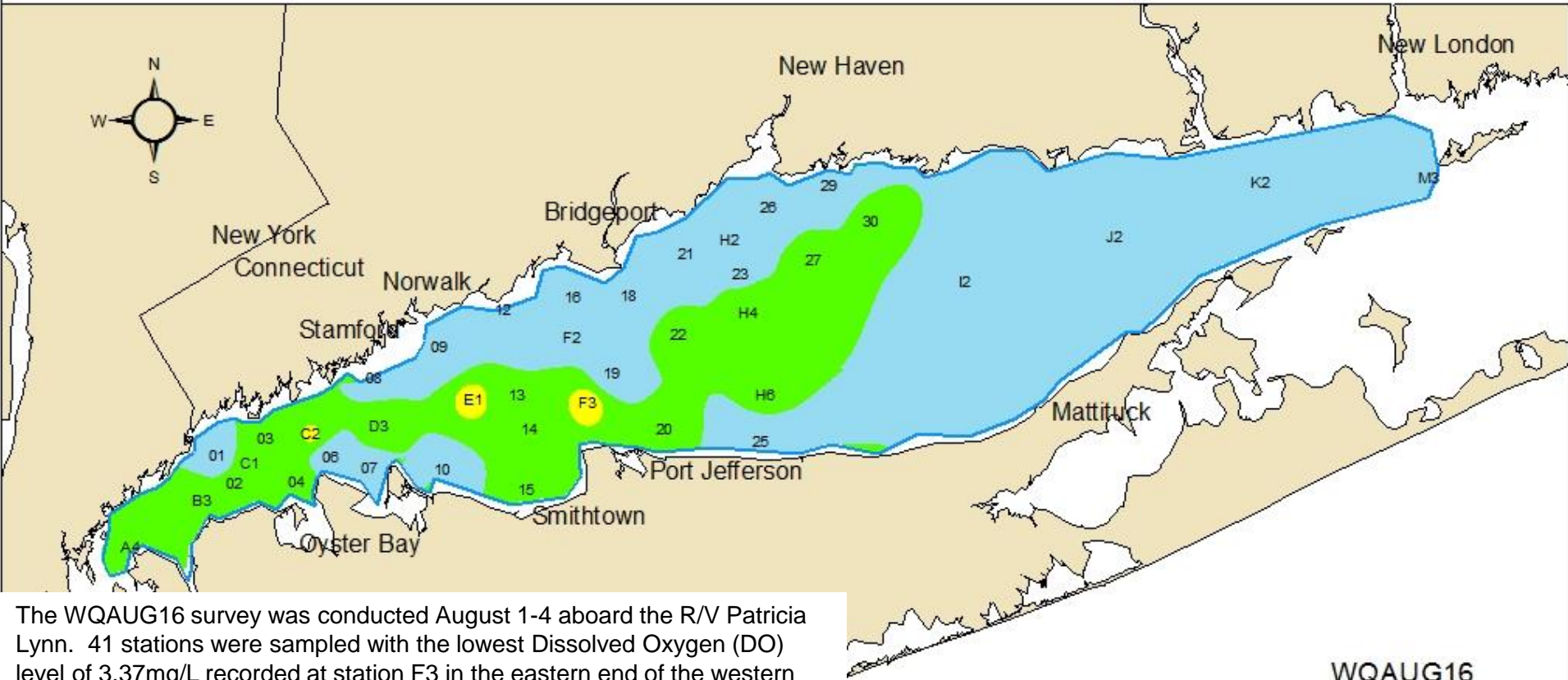




# Dissolved Oxygen in Long Island Sound Bottom Waters

## 1-4 August 2016



WQAUG16

The WQAUG16 survey was conducted August 1-4 aboard the R/V Patricia Lynn. 41 stations were sampled with the lowest Dissolved Oxygen (DO) level of 3.37mg/L recorded at station F3 in the eastern end of the western basin two miles north of Crane Neck, Long Island at a depth of 124 feet. Only two other stations had DO concentrations below 3.5 in the 'marginal' range. Dissolved oxygen concentrations dropped below 4.8 mg/L at 19 additional stations which is one more than in 2015 (18 stations below 4.8mg/L) and one less than in 2014. The area of bottom water with DO concentrations below 3.5 mg/L was 25.7 sq km (9.92 sq mi). Last year 90.1 sq km (34.8 sq mi) were hypoxic, a large contrast from 2014 when 225.6 sq km (87.1 sq mi) was hypoxic and in 2013 when 41.3 sq. km (15.9 square miles) were affected.

Dissolved Oxygen	Severity of impact
0.0 - 0.99	Severe
1.0 - 1.99	Moderately severe
2.0 - 2.99	Moderate
3.0 - 3.49	Marginal
3.5 - 4.79	Interim management goal
4.8+	Excellent - Supportive of marine life