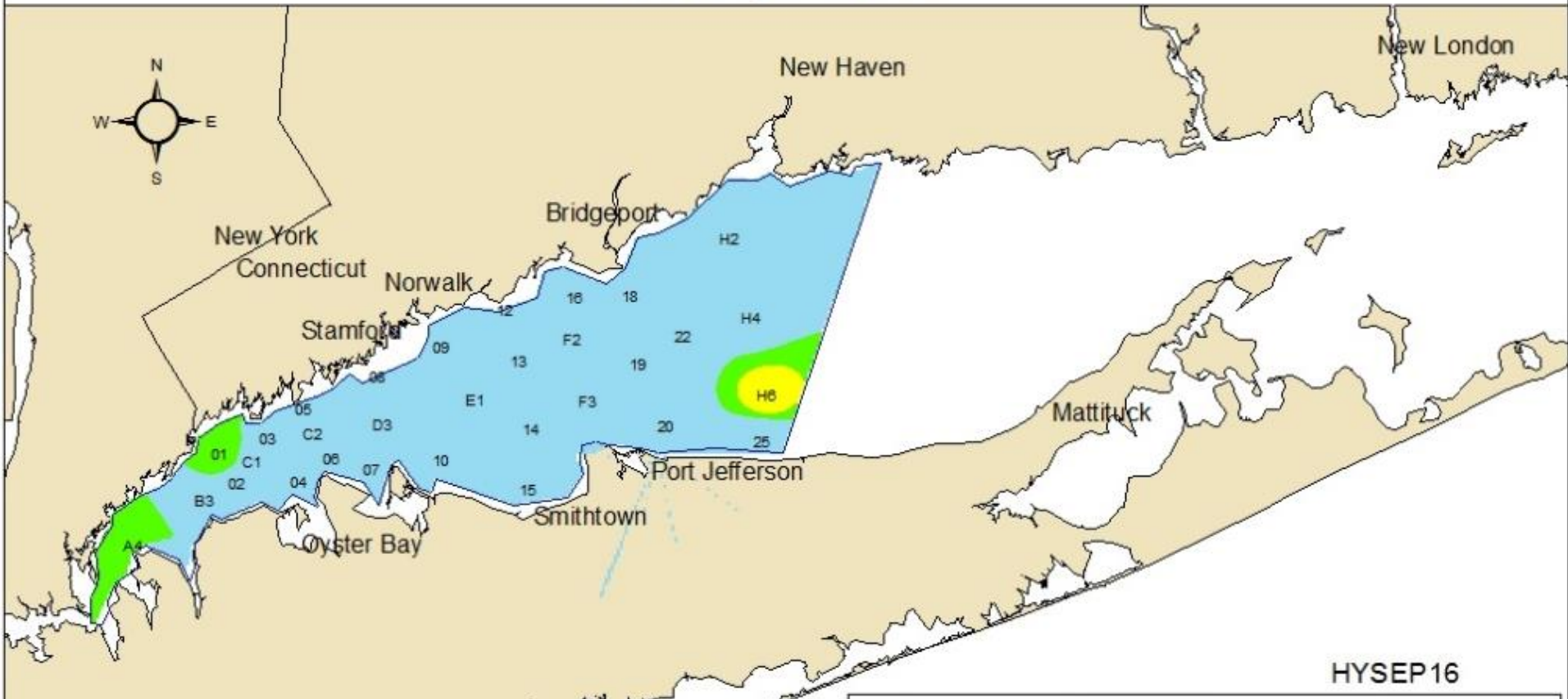




Dissolved Oxygen in Long Island Sound Bottom Waters

12 - 13 September 2016



HYSEP16

The HYSept16 survey was conducted September 12-13 aboard the R/V Patricia Lynn. 31 stations were sampled. The lowest DO level recorded was 3.03 mg/L at station H6. No stations had DO below 3.0 and three stations had CO concentrations below 4.8 mg/L. None of the sample stations dropped below 3.0 mg/L. Therefore, this year and for the past three years there has not been any area of bottom water affected by hypoxia in mid-September. The area of bottom water with dissolved oxygen concentrations below 3.5 mg/L was 30.7 sq km (11.8 sq mi).

Dissolved Oxygen	Severity of impact
0.0 - 0.99	Severe
1.0 - 1.99	Moderately severe
2.0 - 2.99	Moderate
3.0 - 3.49	Marginal
3.5 - 4.79	Interim management goal
4.8+	Excellent - Supportive of marine life