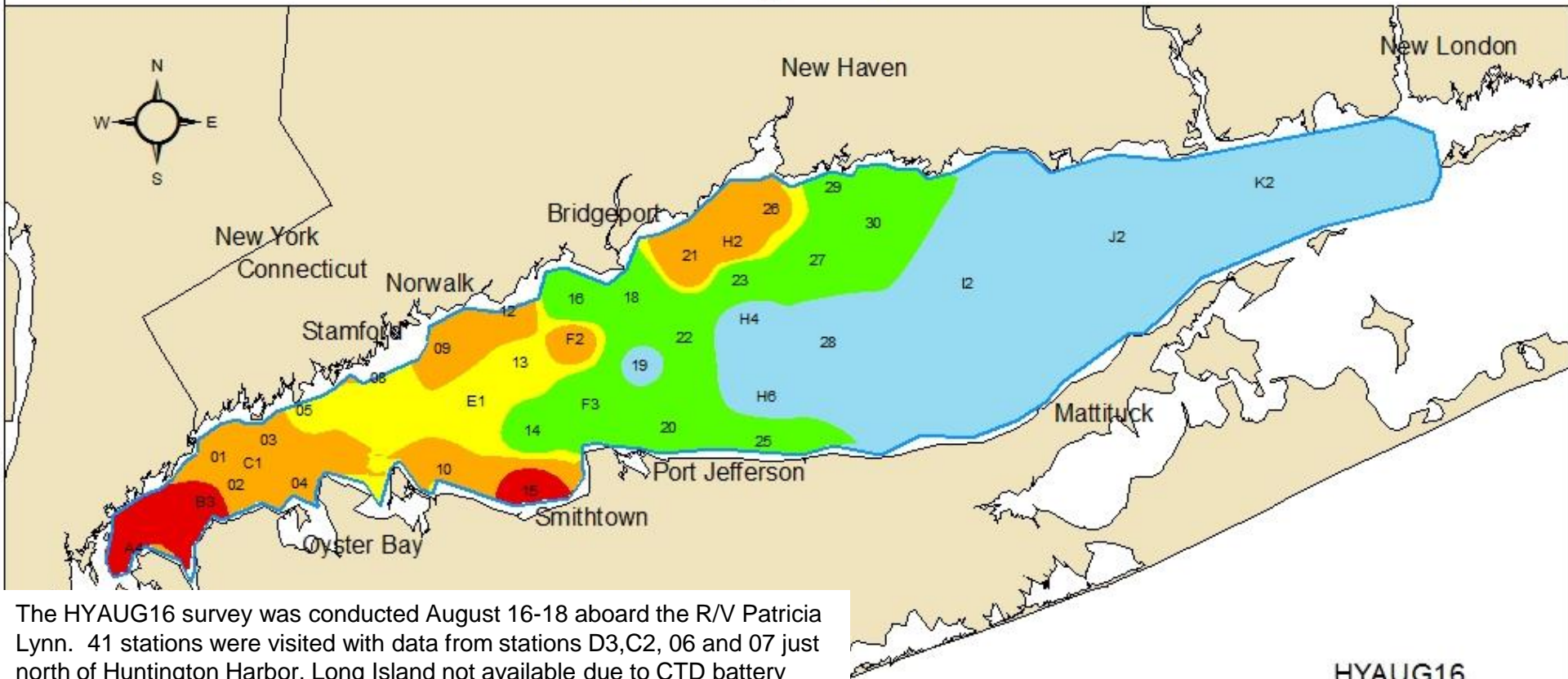




Dissolved Oxygen in Long Island Sound Bottom Waters

16 & 18 August 2016



HYAUG16

Dissolved Oxygen	Severity of impact
0.0 - 0.99	Severe
1.0 - 1.99	Moderately severe
2.0 - 2.99	Moderate
3.0 - 3.49	Marginal
3.5 - 4.79	Interim management goal
4.8+	Excellent - Supportive of marine life

The HYAUG16 survey was conducted August 16-18 aboard the R/V Patricia Lynn. 41 stations were visited with data from stations D3, C2, 06 and 07 just north of Huntington Harbor, Long Island not available due to CTD battery issues. Therefore the Dissolved Oxygen (DO) colored zones on this map were extrapolated based on DO observed at other nearby stations. The lowest DO level recorded was 1.37 mg/L at station A4. Two other stations had DO concentrations below 2.0 mg/L and 12 additional stations had DO below 3.0 in the moderate hypoxic range. The area of bottom hypoxia below 2.0 was estimated at 40.2 Sq.mi. with an additional 157.03 mi² between 2.0 and 3.0 mg/L. The total maximum area of hypoxia below 3.0mg/L was 197.46 mi² which is the second largest area since 2006 when it was last at 199 sq.mi in early August. 2012 was the only other worst year at 288.5 mi².