

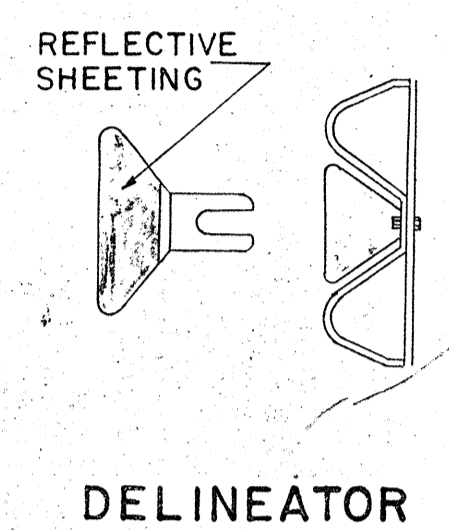
MD-I END ANCHORAGE TYPE I

TABLE "A"	
CURVATURE (DEGREE OR RADIUS)	POST SPACING
LESS THAN 26° (220' RAD OR MORE)	12'-6"
29 FT TO 111 FT *	6'-3"
110 FT TO 76 FT *	4'-2"
75 FT TO 50 FT *	3'-1 1/2"
LESS THAN 50 FT.	USE NOT RECOMMENDED

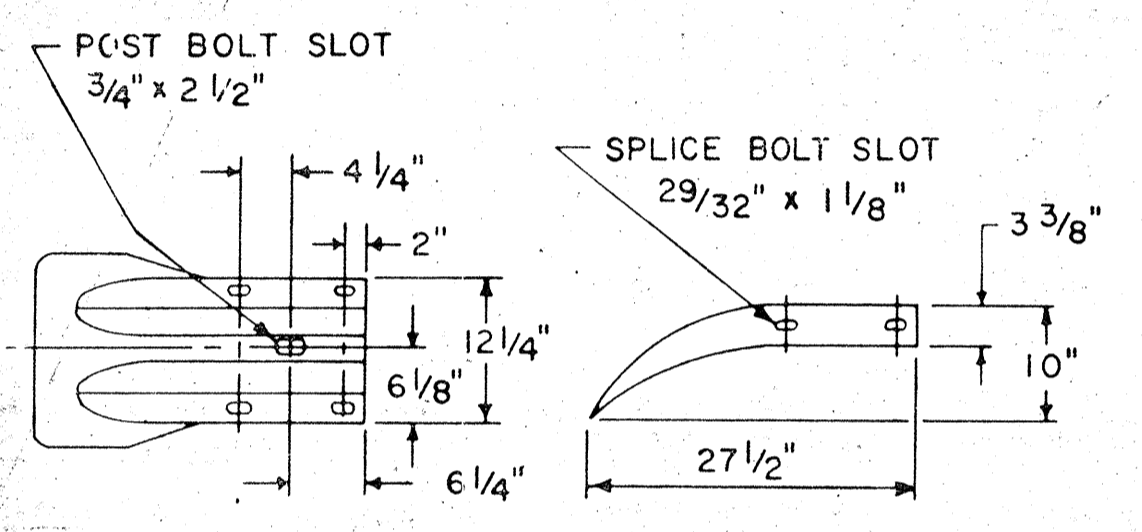
* FOR CURVES WITH RADII OF 150 OR LESS, ALL RAIL MEMBERS SHALL BE FABRICATED TO THE PROPER RADIUS.

DELINEATOR SPACING	
RADIUS OF CURVE	SPACING ON CURVE
150'	25'
300'	50'
700'	75'
1000'	100'
2000'	150'
3000' OR FLATTER	200'

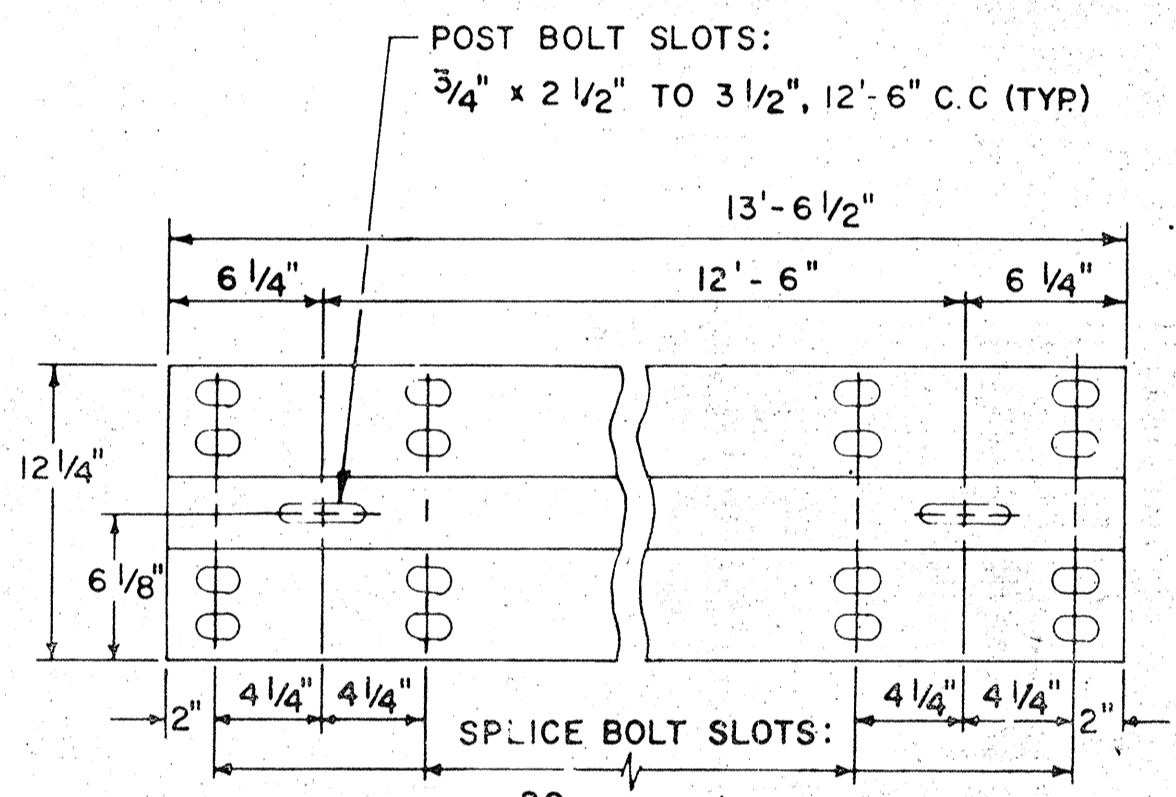
DELINEATOR TO BE INSTALLED ON POST CLOSEST TO DESIGNATED SPACING.



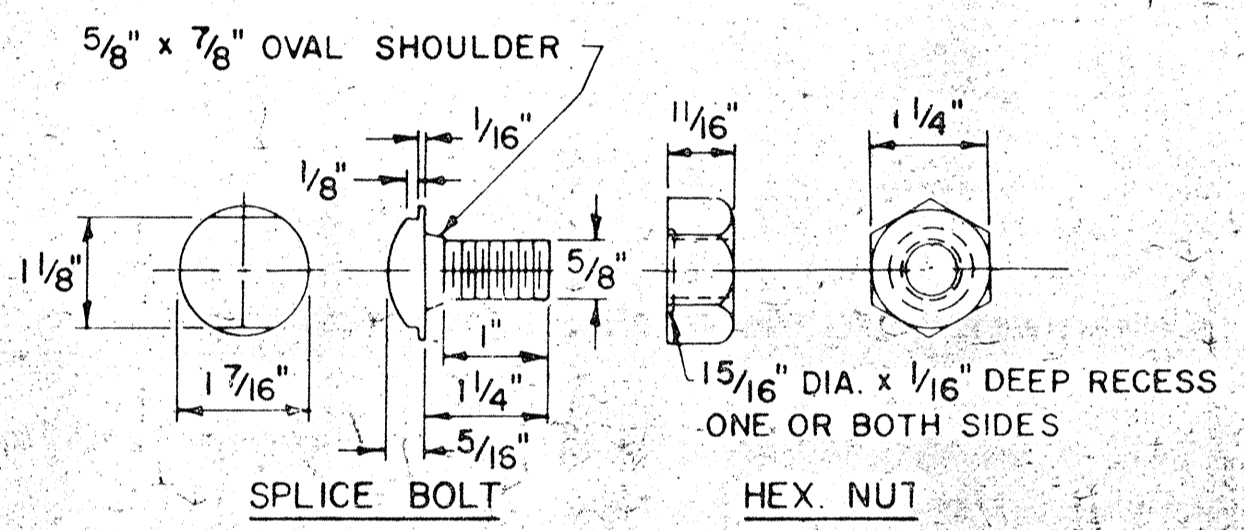
REFLECTIVE SHEETING TO BE WHITE EXCEPT THAT ON THE LEFT OF DIVIDED STREETS, HIGHWAYS, RAMPS AND ONEWAY ROADWAYS IN THE DIRECTION OF TRAVEL IT SHALL BE YELLOW. REFLECTORIZE RAIL THAT IS PARALLEL TO, BUT NOT GREATER THAN 6' FROM THE EDGE OF SHOULDER ONLY. MIN. OF 3 PER INST.



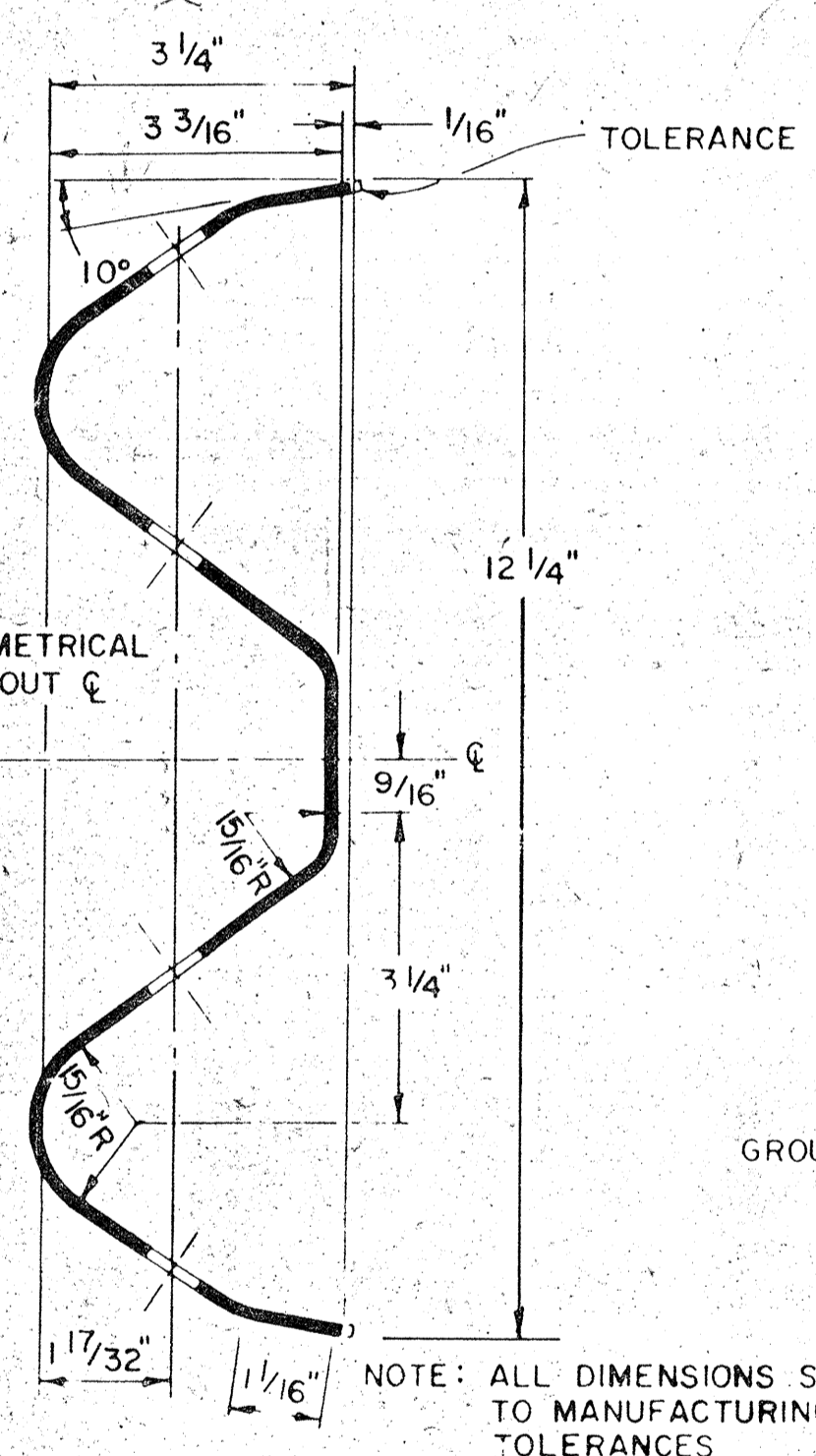
DETAIL "B" TERMINAL ELEMENT



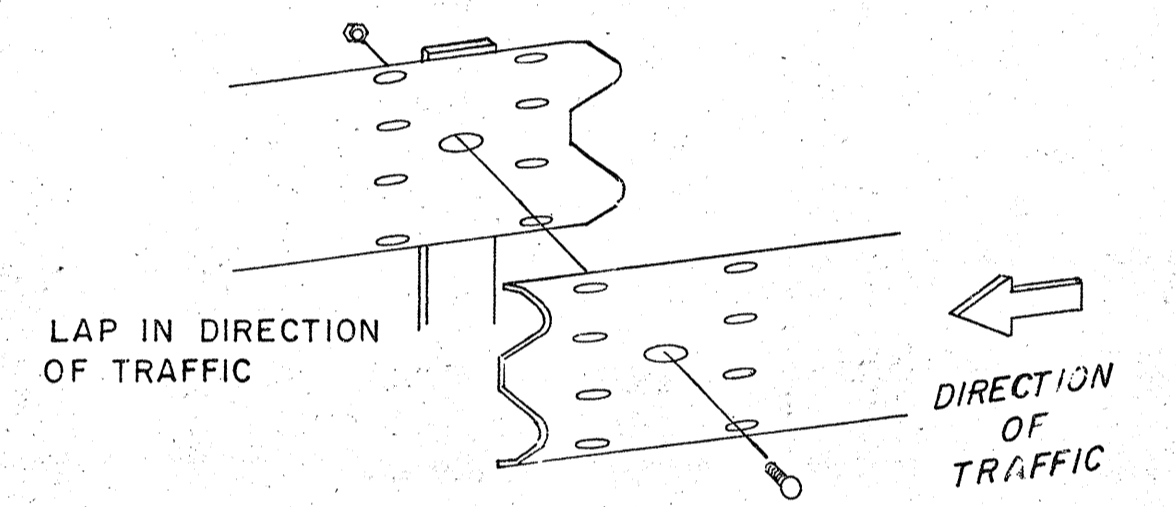
DETAIL "C" TYPICAL RAIL ELEMENT CLASS A, TYPE 2



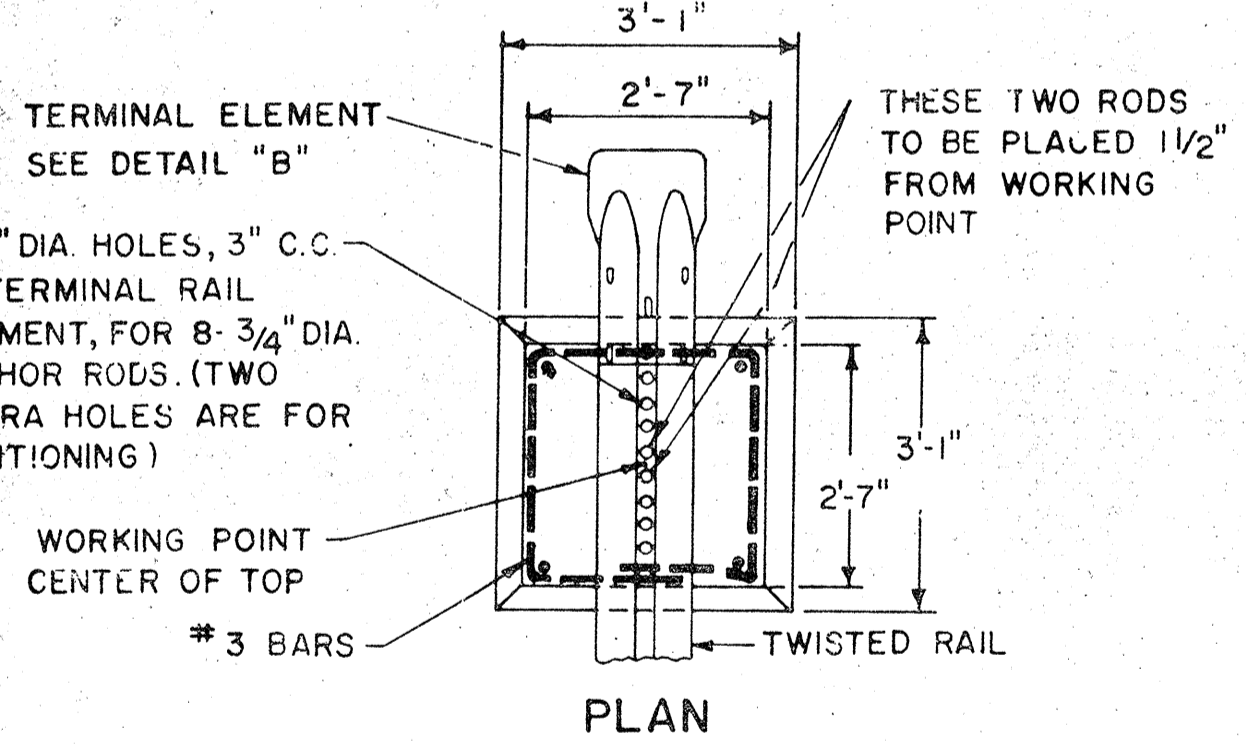
DETAIL "H" SPLICE BOLT AND NUT
NOTE: AFTER GALVANIZING, THE NUT SHALL BE FREE RUNNING ON THE BOLT.



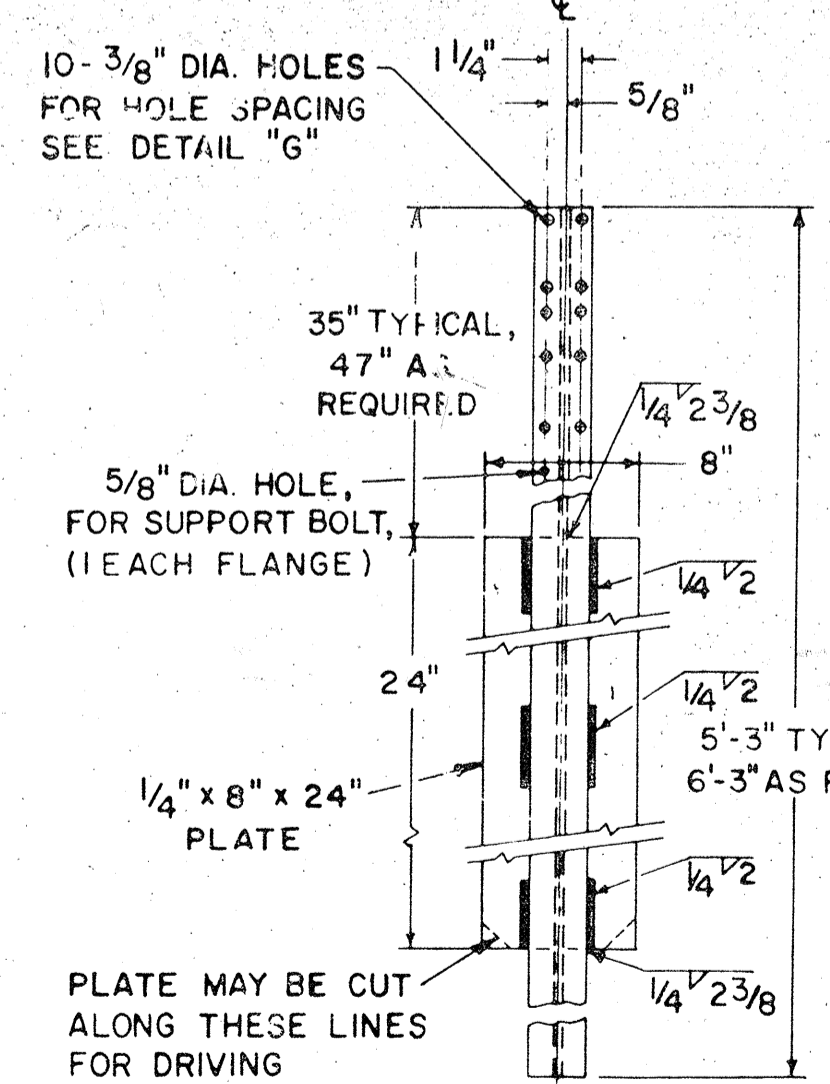
DETAIL "I" SECTION THRU RAIL ELEMENT



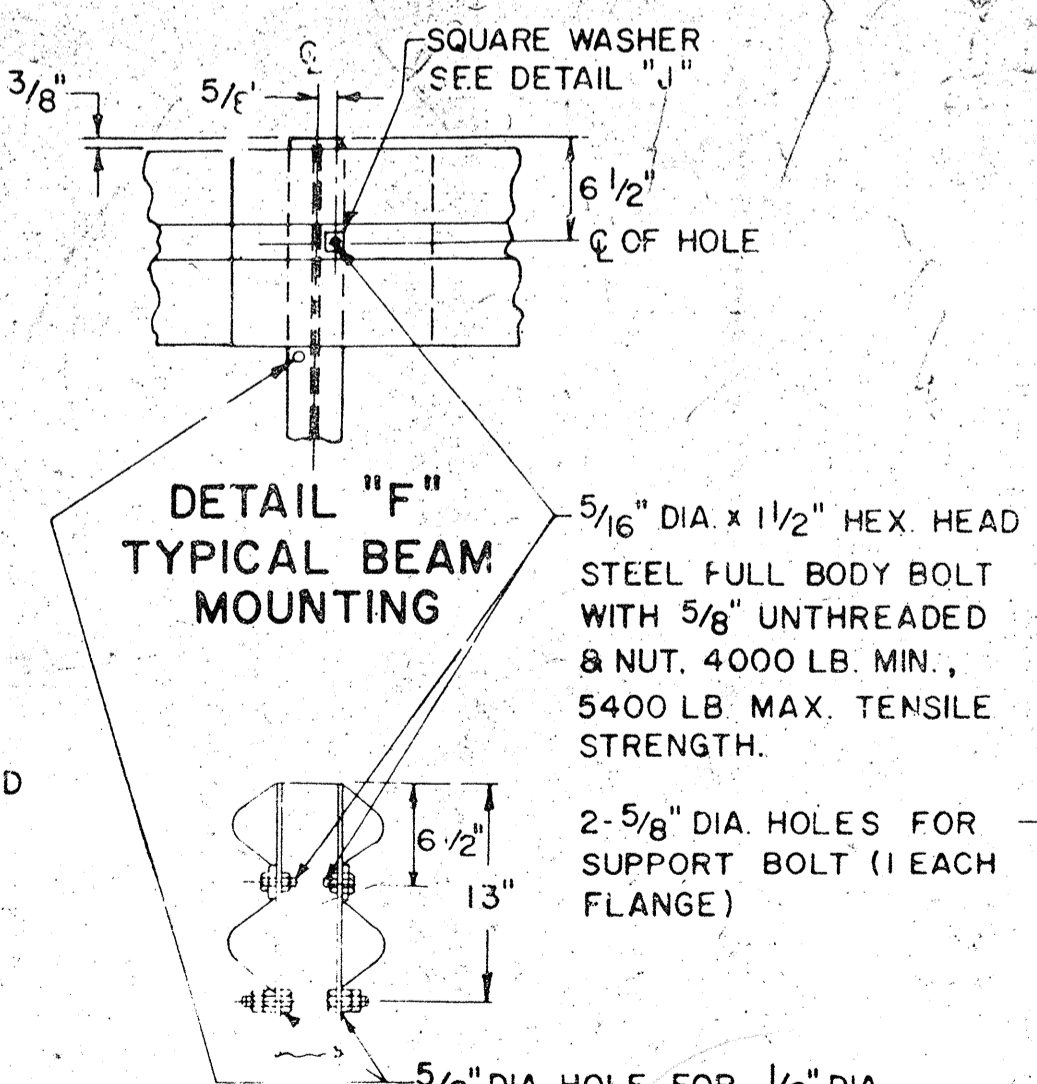
DETAIL "K" BEARING CLAMP
NOTE: TO BE INSTALLED ONLY ON POST NEAREST CONCRETE END ANCHOR.



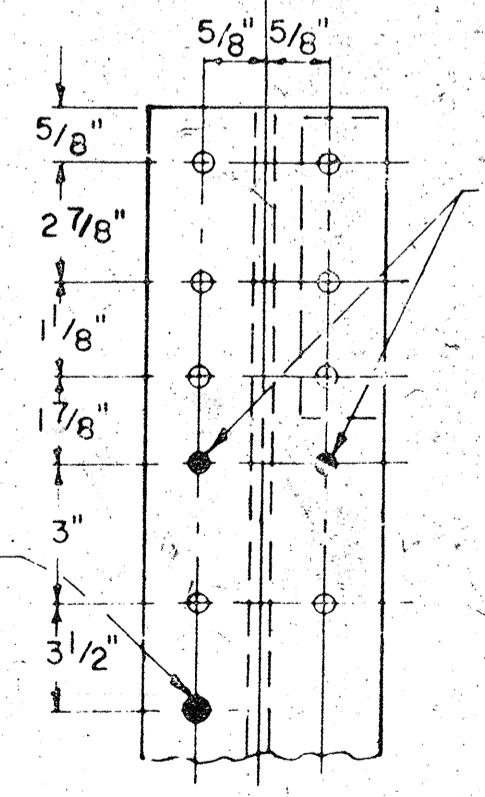
DETAIL "A" CONC. END ANCHOR TYPE I



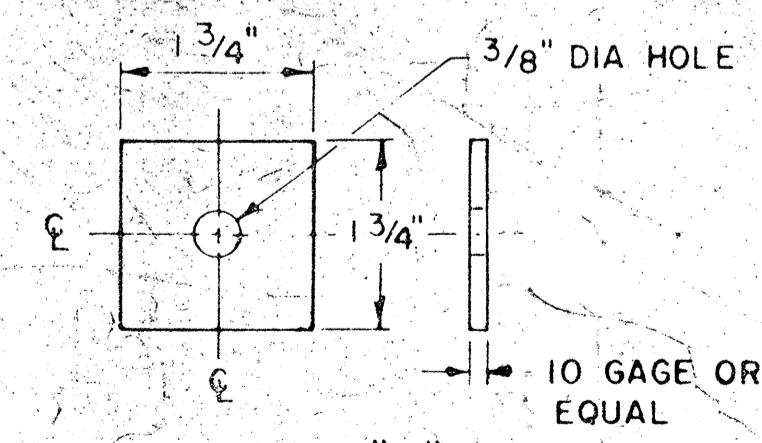
DETAIL "D" POST S3 x 5.7



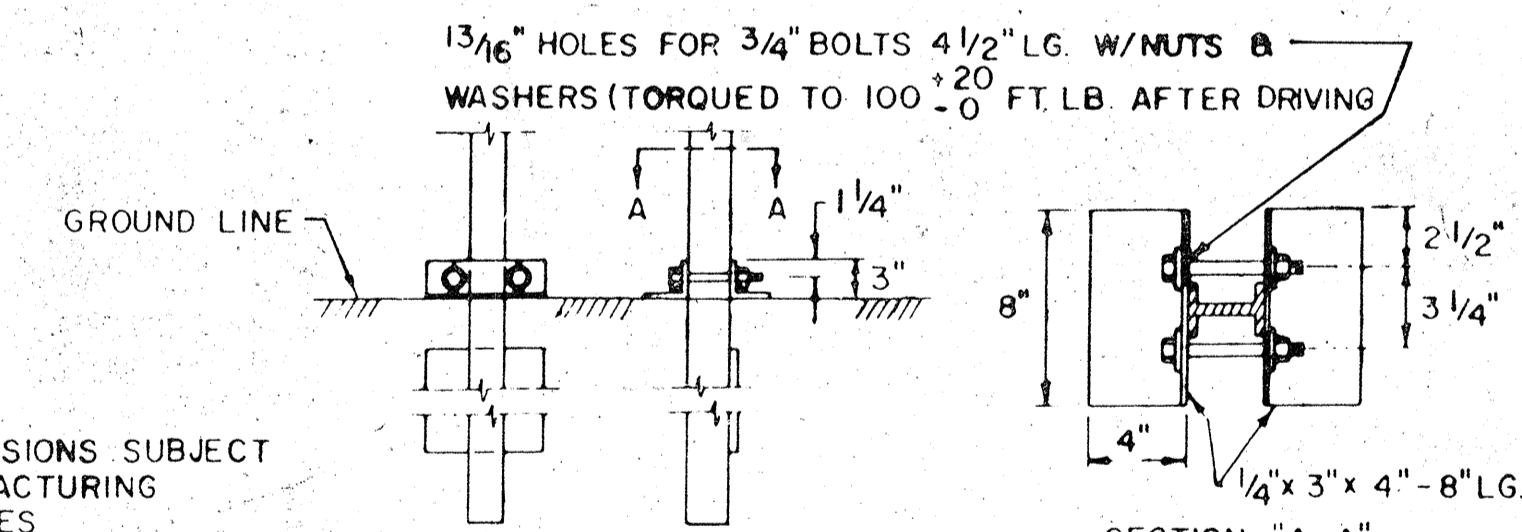
DETAIL "F" TYPICAL BEAM MOUNTING



ELEV. DETAIL "G" BOLT HOLE SPACING



DETAIL "J" SQUARE WASHER PLACED IN VALLEY OF BEAM FOR MOUNTING TO POST



SECTION "A-A"

REVISIONS		
NO.	DATE	DESCRIPTION
1	6-1-85	220-G-910-D Lap & reflector added
2	6-1-87	26' rail length deleted.

CONNECTICUT DEPARTMENT OF TRANSPORTATION BUREAU OF HIGHWAYS

METAL BEAM RAIL (TYPE MD-I)

SCALES NOT TO SCALE
MADE BY M. DI TARANTO DATE 4-21-72
CHECKED BY J.D. BARRY DATE 4-28-72
APPROVED BY *[Signature]* DATE 6-16-72

STANDARD NUMBER 910-D