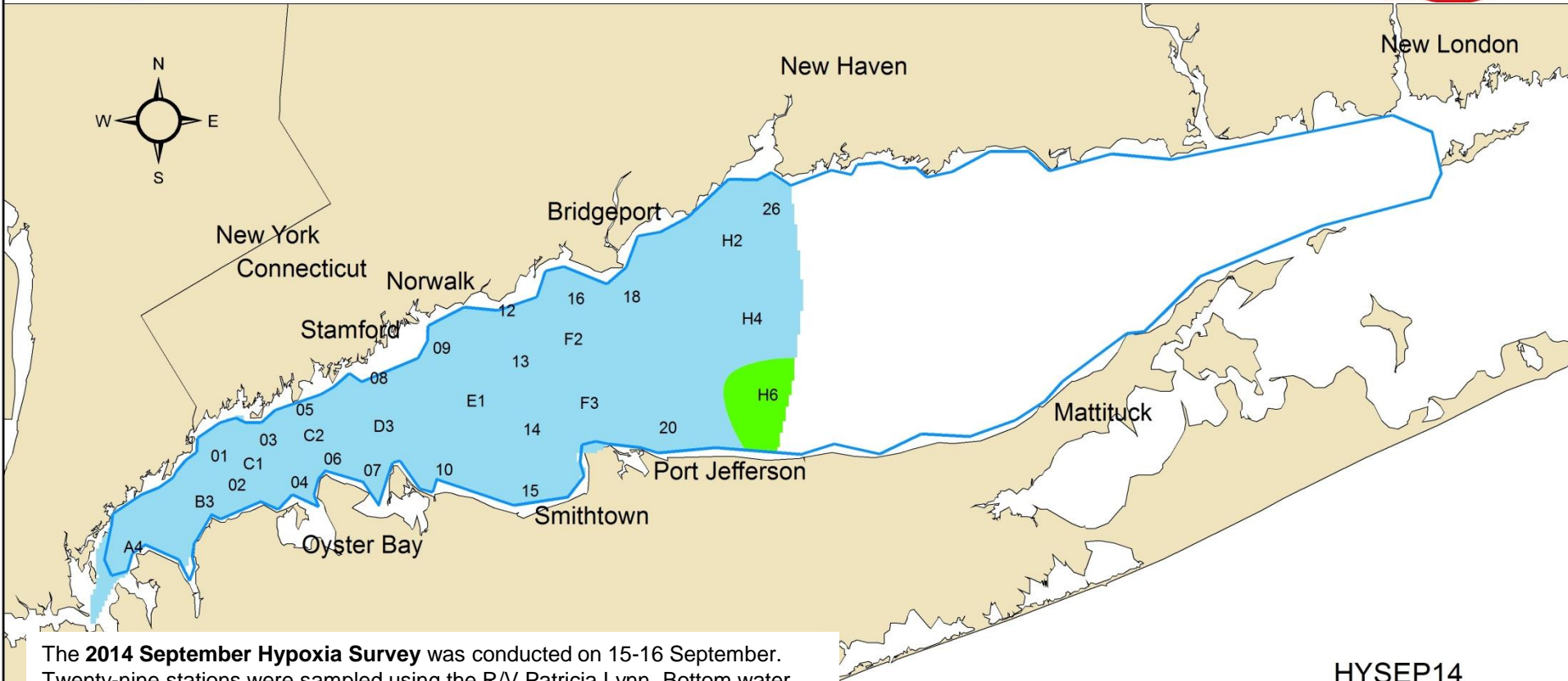




Dissolved Oxygen in Long Island Sound Bottom Waters

15-16 September 2014



The **2014 September Hypoxia Survey** was conducted on 15-16 September. Twenty-nine stations were sampled using the R/V Patricia Lynn. Bottom water dissolved oxygen concentrations were below 4.8 mg/L at only one station- H6. This is better than in 2013 when nine stations were less than 4.8 mg/L and one of those stations was less than 3.5 mg/L. The lowest DO concentration was 4.39 mg/L. A total of 59.7 km² (23.05 mi²) exhibited DO concentrations below 4.8 mg/L. In 2013, a total of 27.1 km² (10.4 mi²) were below 3.5 mg/L and 371.2 km² (143.3 mi²) were below 4.8 mg/L. During the 2012 HYSEP cruise, 28.3 km² (10.9 mi²) of bottom water exhibited DO concentrations in the 3.5-4.8 mg/L bracket. There were no HYSEP cruises conducted in 2011, 2010, or 2009. 2008 was the last time in the past six years that hypoxic conditions were encountered.

HYSEP14

Dissolved Oxygen		Severity of impact
	0.0 - 0.99	Severe
	1.0 - 1.99	Moderately severe
	2.0 - 2.99	Moderate
	3.0 - 3.49	Marginal
	3.5 - 4.79	Interim management goal
	4.8+	Excellent - Supportive of marine life