

Town of

Office of Water & Sewer Commission
Tel: 860-739-6931 • Fax: 860-739-6930



East Lyme

Post Office Box 519
Niantic, Connecticut 06357

August 3, 2012

Cameron Walden
Connecticut Department of Public Health
Drinking Water Section
DWSRF Program
410 Capitol Avenue – MS# 51WAT
P.O. Box 340308
Hartford, CT 06134-0308

Re: East Lyme-New London Interconnection
Public Water System: East Lyme Water and Sewer Commission
PWSID: CT0450011

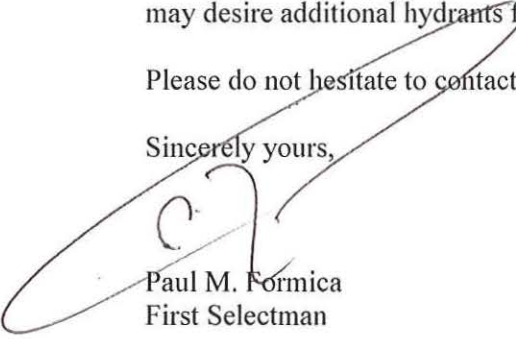
Mr. Walden:

This is to request that the Connecticut Department of Public Health approve the proposed fire service connections for the properties in the industrial park in the Town of Montville as designated on the enclosed zoning map. The proposed interconnection will run through the industrial park and include an elevated water storage tank that will be capable of providing fire protection and enhance public safety. A letter is also enclosed from the Town of Montville that offers support for the project and the desire for fire protection to serve the industrial park.

In addition, design plans of the proposed transmission main were recently submitted to your office for review. The fire service connections for the industrial park are shown on the plans as well as fire hydrants along the entire transmission main. The hydrants are mainly intended for water main flushing and the maintenance of water quality. The Town of Montville and Waterford may desire additional hydrants for fire protection purposes.

Please do not hesitate to contact me if you have any questions concerning this matter.

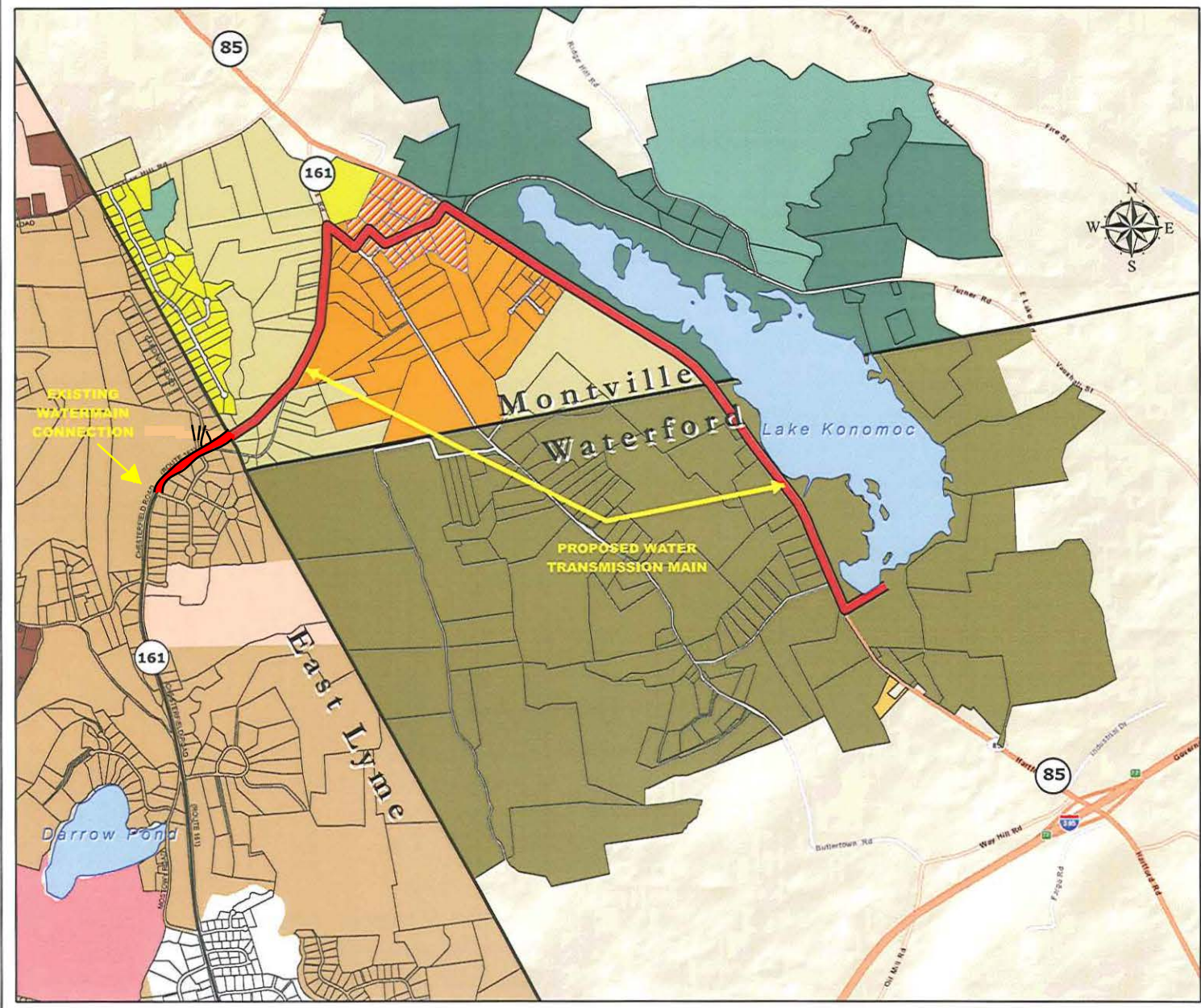
Sincerely yours,



Paul M. Formica
First Selectman

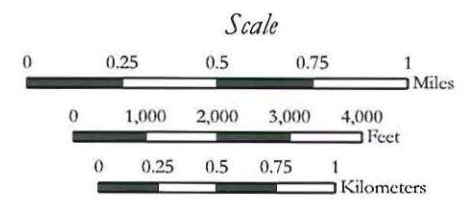
C: Mayor Ronald McDaniel
East Lyme Water and Sewer Commission

East Lyme - New London Interconnection Project Transmission Main Location




Legend

Waterbodies	Waterford Zoning
Transmission Main	IP-3
Parcels	RU-120
Fire Service Connections	Montville Zoning
E. Lyme Zoning	LI
RU-80	OS
RU-40	R40
RU-40/20	R80
SU	WRP-160
SU-E	



DISCLAIMER

Although every effort has been made to ensure that the spatial data on any map that is produced is of the highest accuracy and quality, it is, nevertheless, only appropriate for planning purposes. The information, as presented, is not intended for the legal interpretation of boundary or property lines, either municipal or private.



December 29, 2011
Revised July 27, 2012

Town of East Lyme
Department of Planning

TOWN OF MONTVILLE

Office of the Mayor

310 Norwich-New London Turnpike
Uncasville, Connecticut 06382



Paul Formica, First Selectman
Town of East Lyme
PO Drawer 519
Niantic, CT 06357

July 25, 2012

Dear First Selectman Formica,

The project objectives for this water line have been clear since its inception. They include a resolution to the East Lyme summer water supply deficit, the restriction of domestic water supply access, the limited extension of fire service laterals and regional cooperation.

The Town of Montville supported this project despite the proposed tower location which would have been sited on one of our few light industrial lots. The Town has not requested access to the domestic supply even though our industrial lots have frontage parallel to the proposed line. The extension of fire service laterals will not result in increased lot density due to the restriction on domestic supply. The installation of fire service laterals will not result in the Town changing the current L1 zoning classification, and the provision of fire service laterals will not have any impact on types of uses currently allowed for prospective businesses that may locate there.

The Town of Montville will formalize an agreement with the Town of East Lyme to limit water service to the industrial park to the fire service laterals and that no domestic supply will be provided unless approved by the Town of East Lyme and the Department of Public Health.

A portion of the water main pipe line is proposed to be constructed through 1,200 feet of roadway which is currently paved with a binder coat only. The Town does not want the road excavated for lateral connections after final paving and post road acceptance.


The Town's Public Officials, as well as the State's, have an obligation to enhance the public's safety given this logical and strategic opportunity to do so. In addition, the installation of fire protection connections is a proactive safeguard in keeping with Growth Management Principle # 5 of the State C&D Plan. The project prevents a potential "non-point source contamination" of the Lake Konomoc Watershed. Sprinkler systems within structures are a "proactive pollution prevention" tool.

A recent fire in a small commercial center located in the northern quadrant of the Latimer Brook watershed, required 500,000 gallons of water, delivered by pumper trucks, to extinguish the fire. Had a first line of defense sprinkler system been available to the building, the potential non-point source of pollution could have been minimized.

The installation of fire protection connections is a proactive safeguard. The activation of a sprinkler system triggers an alarm which reduces response time. The systems are designed to control and minimize the fire, thus reducing the risk that a non-point source of pollution will be created by pumping hundreds of thousands of gallons of water into a light industrial building. The majority of public water supply sources in Southeastern Connecticut are bisected by major highways. Route 85 is a high volume, high frequency accident Route. The catastrophic accident and resulting fireball and spill which occurred at the intersection of Chesterfield Road and Route 85 should be a lesson learned. Proactive safeguards, such as hydrant installations along these highways and roads which are parallel to or bisect surface water supplies should be a priority.

This is a regional project which is consistent with the State Plan of Conservation and Development. The Town of Montville requests that the Town of East Lyme request the timely, final Department of Public Health approval of the installation of fire service laterals from the new transmission water main to the light industrial lots identified on the attached map.

Please feel free to contact me should you have any questions.



Ronald McDaniel
Mayor

Cc: Brad Kargl, Municipal Utility Engineer
Marcia Vlaun, Montville Town Planner