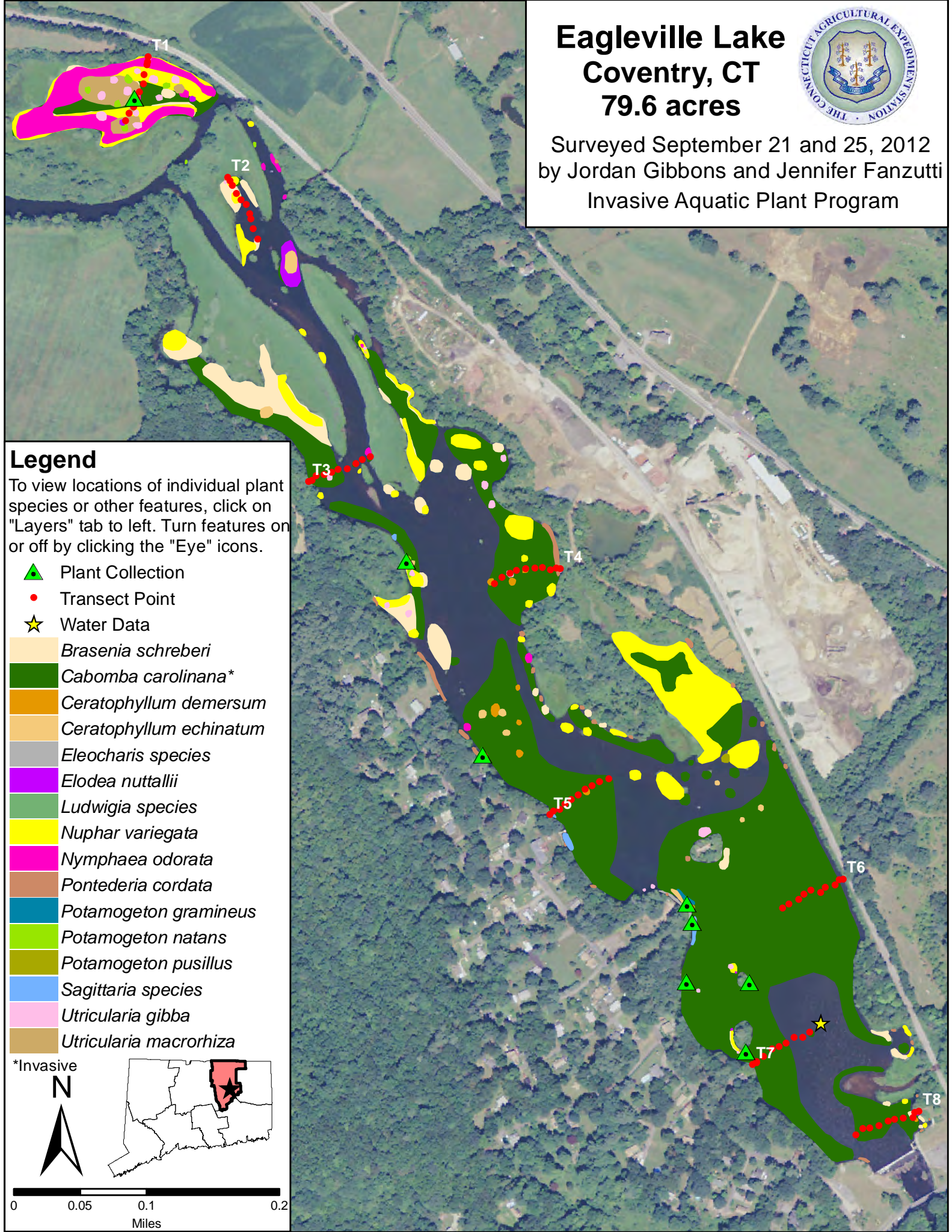


Eagleville Lake Coventry, CT 79.6 acres



Surveyed September 21 and 25, 2012
by Jordan Gibbons and Jennifer Fanzutti
Invasive Aquatic Plant Program



Legend

To view locations of individual plant species or other features, click on "Layers" tab to left. Turn features on or off by clicking the "Eye" icons.

- Plant Collection
- Transect Point
- Water Data
- Brasenia schreberi*
- Cabomba caroliniana**
- Ceratophyllum demersum*
- Ceratophyllum echinatum*
- Eleocharis species*
- Elodea nuttallii*
- Ludwigia species*
- Nuphar variegata*
- Nymphaea odorata*
- Pontederia cordata*
- Potamogeton gramineus*
- Potamogeton natans*
- Potamogeton pusillus*
- Sagittaria species*
- Utricularia gibba*
- Utricularia macrorrhiza*

*Invasive

